

Juris Suite Installation Guide New Installation

Table of Contents

Introduction	2
Planning and Preparation	2
System Requirements	2
Server Required Pre-Install Items.....	2
Servers Running a 64 Bit O/S.....	2
Recommended Configurations	4
Workstations Required Pre-Install Items	5
Recommended Configuration	5
Citrix/Terminal Server Environments.....	5
Juris Database Backup.....	5
Juris Support Contact Information.....	5
Installation	6
Server	6
Downloading the Installation Files	6
Installing Juris Suite Server	6
Configuration of IIS	9
Deployment Manager Installation	15
Deployment Manager Configuration	30
Deploying Juris Suite Updates.....	34
Configuring and Starting Juris Suite Services	37
Creating a Prepopulated Cache (Optional).....	40
Publishing the Juris Suite Dashboard Metrics	41
Synchronize Schemas	42
Client.....	44
Install Juris Suite Client.....	44
Client Configuration	46
Importing a Cache (Optional).....	48
Conclusion	48

Introduction

Welcome to the Juris Suite installation guide. This document is for new installations of Juris Suite only. There is a separate upgrade guide available on the [Juris Support Center](#).

Planning and Preparation

System Requirements

Juris System Requirements can also be viewed at the [LexisNexis Support Center](#) by clicking on Juris System Requirements. The below requirements specifically focus on the Juris Suite program.

Server Required Pre-Install Items

- Juris version 2.35 or Juris version 2.35sp1 must be installed and configured prior to installing Juris Suite 2.35sp1
- Windows Server 2000, Windows Server 2003, Windows Server 2008 **
- SQL Server 2000, SQL Server 2005 or SQL 2005 Express (4GB database limit) **
- The SQL 2005 Management Objects Collection from the SQL 2005 Feature Pack is required for Deployment Manager to function.
 - o For SQL 2000/MSDE you will need to download and install:
 - Microsoft Core XML Services (MSXML) 6.0
 - Microsoft SQL Server Native Client
 - Microsoft SQL Server 2005 Management Objects Collection. If you do not have SQL Server Management Objects Collection installed, you can download them from the link, [SQL Server Management Objects Collection](#).
 - o For SQL 2005/Express you will need to download and install:
 - Microsoft SQL Server 2005 Management Objects Collection. If you do not have SQL Server Management Objects Collection installed, you can download them from the link, [SQL Server Management Objects Collection](#).
- IIS Installed *** (If 64bit O/S follow **Servers Running a 64 Bit O/S** below)
- 2GB of Available Local Hard Drive space
 - 540MB for Installation
 - 570MB for Staging Information
 - 700MB of available for deployment
- JurisSuite installer must have administrative privileges.
- An Outside IP address is required for Web Connect setup.

Servers Running a 64 Bit O/S

Juris Suite can only be run in a 32 bit environment. To adjust a 64 bit Windows Server O/S to properly run Juris Suite, follow these directions. Note: We highly recommend you engage the services of a qualified network technician to implement the changes below.

Switch ASP.NET to run in 32 bit mode – Reference [Microsoft KB Article 894435](#)

1. Click Start>Run, type cmd, and then click OK.
2. Type the following command to enable the 32-bit mode:
cscript %SYSTEMDRIVE%\inetpub\adminscripts\adsutil.vbs SET W3SVC/AppPools/Enable32bitAppOnWin64 1
3. Click OK

-
4. Click Start>Run, type cmd, and then click OK.
 5. Type the following command to install the version of ASP.NET 2.0 (32-bit) and to install the script maps at the IIS root and under:
`%SYSTEMROOT%\Microsoft.NET\Framework\v2.0.50727\aspnet_regiis.exe -i`
 6. Click OK
 7. Make sure that the status of ASP.NET version 2.0.50727 (32-bit) is set to Allowed in the Web service extension list in Internet Information Services Manager.

Switch WebDAV to the 32 bit version and disable the 64 bit version

8. Click Start> Settings> Control Panel > Administrative Tools> Internet Information Services
9. Expand Web Server Extensions
10. Click "Add a New Web service extension..."
11. Name the Extension "WebDAV32"
12. Click Add for the required files and browse to C:\WINDOWS\SysWOW64\inetsrv\httpext.dll.
13. Check "Set Extension status to Allowed"
14. Click OK
15. Highlight WebDAV (the 64 bit version) and prohibit the extension.

Recommended Configurations

Changes based on user count – All other minimum requirements still apply.

- 1-20 Users
 - Single/Dual Xeon Processor
 - Windows Server 2003 R2 **
 - MS SQL Server 2005 **
 - 2GB RAM or higher*
- 21-50 Users
 - Dual Xeon Processor
 - Windows Server 2003 R2**
 - MS SQL Server 2005 **
 - 3GB RAM or higher*
- 51+ Users
 - Quad Xeon Processor
 - Windows Server 2003 R2
 - MS SQL Server 2005
 - 4GB RAM or higher*

Additional Information

* The database server computer should be equipped with minimum 2GB of RAM plus 32 MB of RAM per active user (the estimated number of users concurrently accessing the server at any one time). Inadequate memory for the number of concurrently accessing users will reduce performance.

** SQL Server 2008 is not supported at this time. Vista and Windows 7 is NOT supported as a server for Juris products. Windows Server 2008 is supported with known issues. Before upgrading to Windows Server 2008, please read the compatibility document found at <http://support.lexisnexis.com/Juris/>. All operating systems and SQL instances should be updated to the current releases of service packs and updates marked critical. A competent network engineer should be available to help troubleshoot any issues that arise. Windows Server 2008 platform requires specific IIS settings that must be done prior to installation. These instructions are found on page 15 of this document.

*** If running Windows Server 2003, WebDAV, ASP.NET, and Active Server Pages have to be installed and allowed in IIS Web Service Extensions.

Workstations Required Pre-Install Items

- .NET 2.0 Framework
- User has local administrative rights *
- Juris 2.35 or Juris 2.35sp1 Application and/or License Manager must be installed

Recommended Configuration

- Intel Duo Core processor (Or AMD equivalent)
- 2GB RAM (Normal Users) or 3GB RAM (Power Users)
- Display Resolution set at 1280x1024 with Normal 96dpi.
- Windows 2000, XP Professional, Vista Business or Ultimate, Windows 7 Professional or Ultimate **.

Additional Information

*If Local Administrative rights cannot be given, please follow the [Limited-Rights Environment](#) document located on our Support Center website.

**JurisSuite is not supported on Vista Home Edition or Windows 7 Home Premium. If you are using Vista Business/Ultimate, or Windows 7 Professional/Ultimate, you must have User Account Control disabled installing the Juris Suite Client. Before upgrading to Windows 7, please read the compatibility document found at <http://support.lexisnexis.com/Juris/>.

Citrix/Terminal Server Environments

- Juris supports operation on Citrix® MetaFrame® and Windows Terminal Server. Setup and configuration are not supported by Juris and should be completed by a qualified Systems Administrator. In such environments, the Juris database must reside on a separate server from that used for Citrix or Terminal Server.
- Juris Suite is not available as Thin Client software. Uses of Juris Suite in these environments require large amounts of RAM and sometimes multiple server configurations to perform load balancing.

Juris Database Backup

After the checklist for hardware and software requirements has been met, it is best practice to **backup** using the Juris Management Console. Documentation on [Juris Management Console Backup](#) is located on the Support Center website.

Juris Support Contact Information

By Phone: 877-377-3740

Juris Support Center: <http://support.lexisnexis.com/juris>

Additional How-To Information: <http://www.juris.com/jurishelp>

Installation

Server

Downloading the Installation Files

To install the **Juris Suite Server**, complete the following:

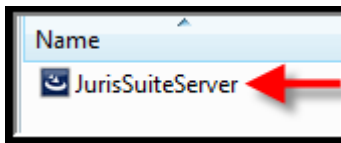
1. Using a web browser, navigate to the <http://support.lexisnexis.com/Juris/>
2. Click on Juris and Juris Suite under Downloads and Utilities.
3. Click the Juris Suite downloads link.
4. Follow instructions on the site to save the installation files.
5. Navigate to the extracted files and right click to open the **AppStart** file with **Notepad**.
6. Change the word **SERVERNAME** to the name of the server that Juris Suite Server was installed to.

```
<Config>  
<AppFolderName>GeneralRelease</AppFolderName>  
<AppExeName>Mercury.exe</AppExeName>  
<AppLaunchMode>process</AppLaunchMode>  
<WebServiceAddress>http://SERVERNAME/JurissuiteUpdater/updaterService.asmx</WebServiceAddress>  
<DeleteOldVersions>True</DeleteOldVersions>  
<RunningForFirstTime>True</RunningForFirstTime>  
</Config>
```

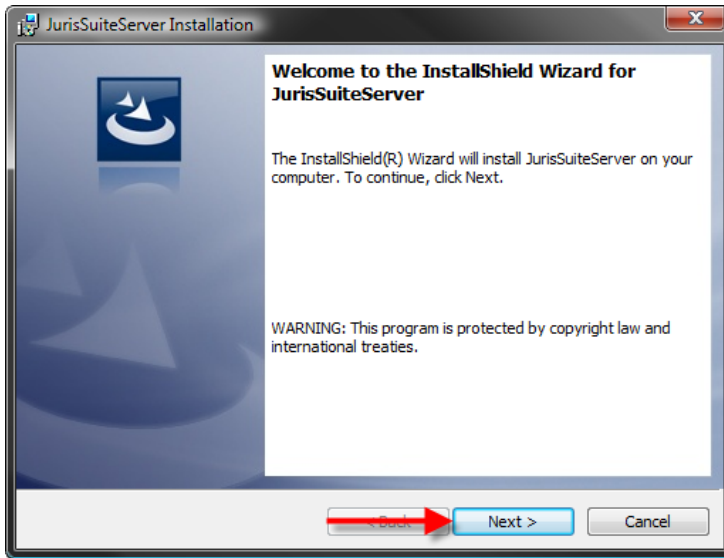
7. Close and Save the **AppStart** file.

Installing Juris Suite Server

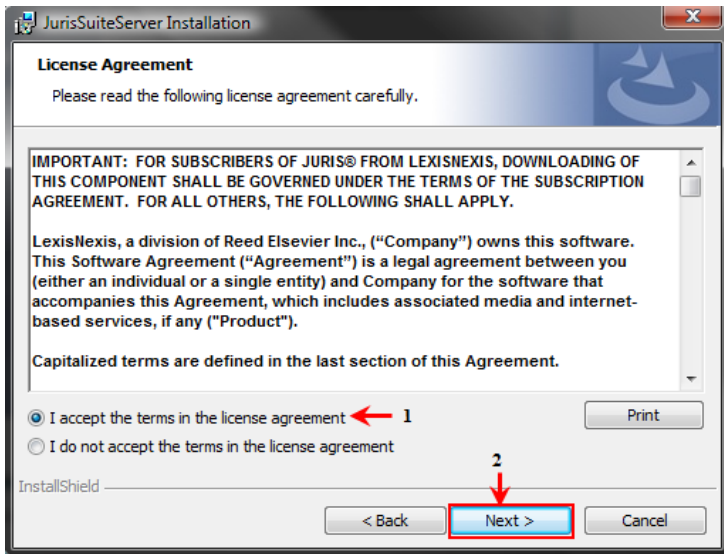
1. Locate the extracted installation files and **double click** on the **Juris SuiteServer.exe** file to begin the installation.



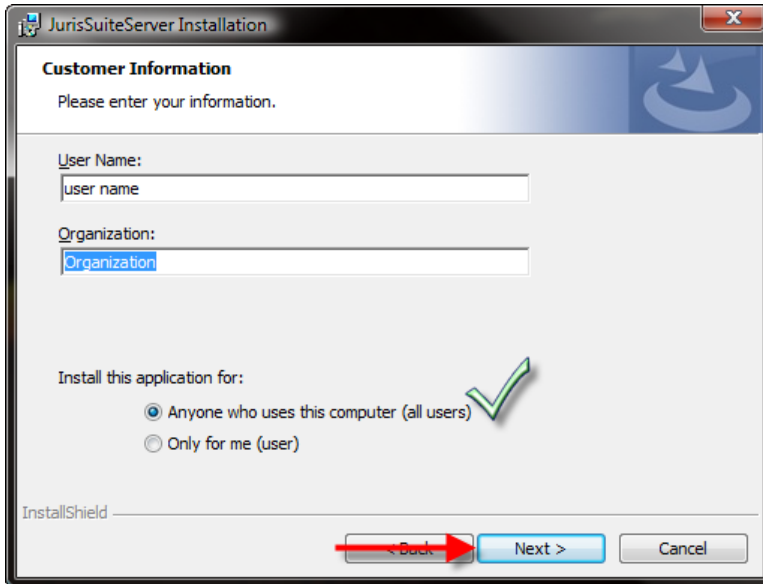
2. Click the **Next** button on the **Welcome** installation screen.



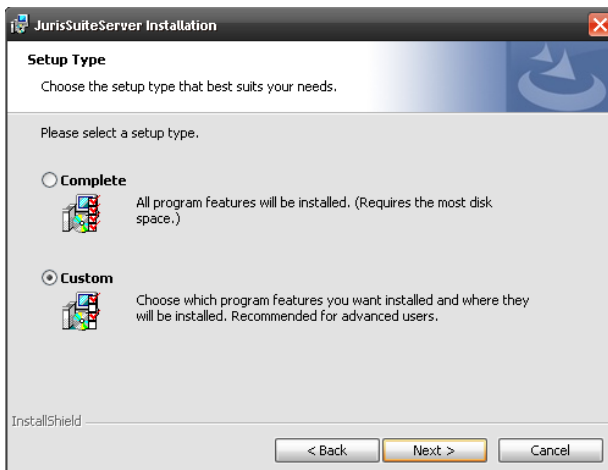
3. Select **Accept** on the license agreement window and click the **Next** button.



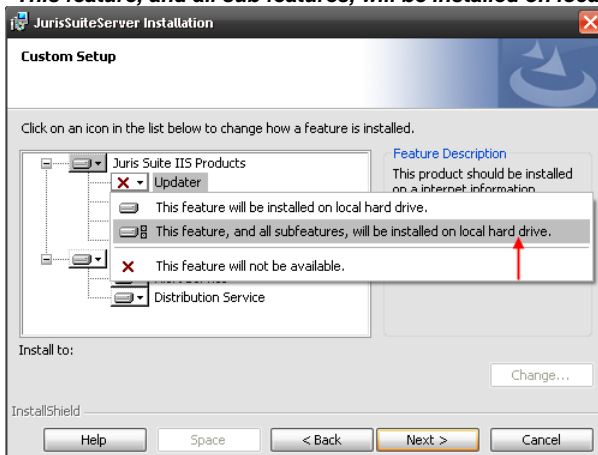
4. Enter the appropriate **Customer Information** and click the **Next** button.



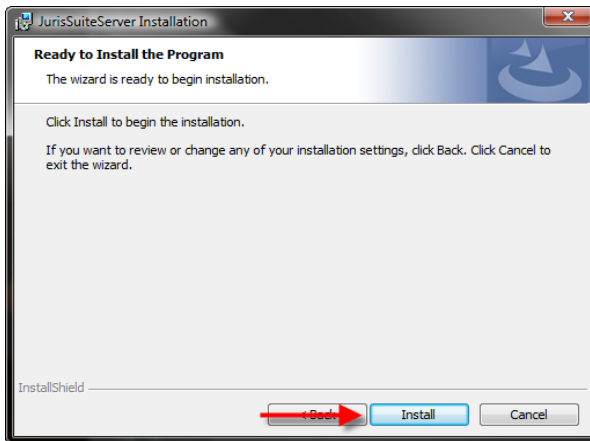
5. On the **Setup Type** window, if Juris Suite is being installed to the Local Disk C: drive, accept the default of **Complete**, click the **Next** button, and skip to step 7. Otherwise if installing on any drive other than C:\ you should select **Custom** and click the **Next** button.



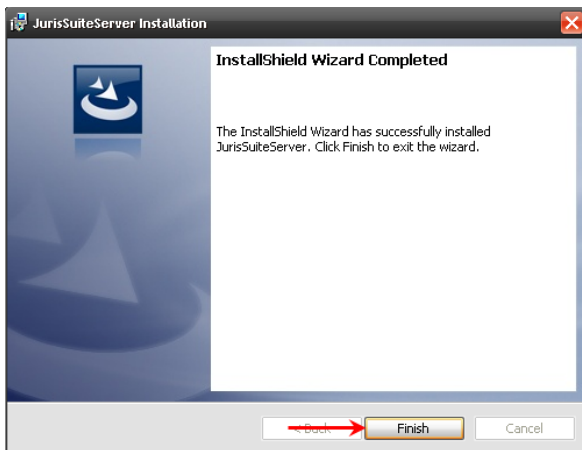
6. From the Custom install screen, you will need to select the **Updater** combo box under the Juris Suite IIS Products. Select **"This feature, and all sub features, will be installed on local hard drive."**



7. Click the **Install** button to execute the installation of the server application.



8. Click the **Finish** button on the final window.

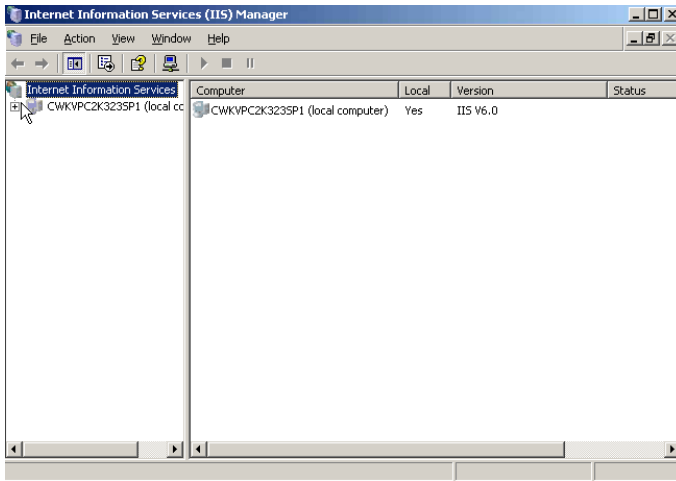


Configuration of IIS Server 2003

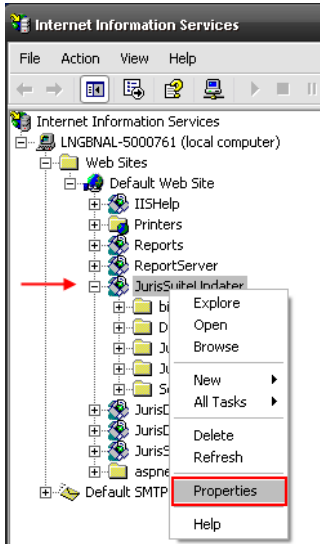
To configure IIS properly for Juris Suite, perform the following:

9. Start the **IIS** management console. This can be accessed from within the **Administrative Tools**. **Start > All Programs > Administrative Tools > Internet Information Services Manager**

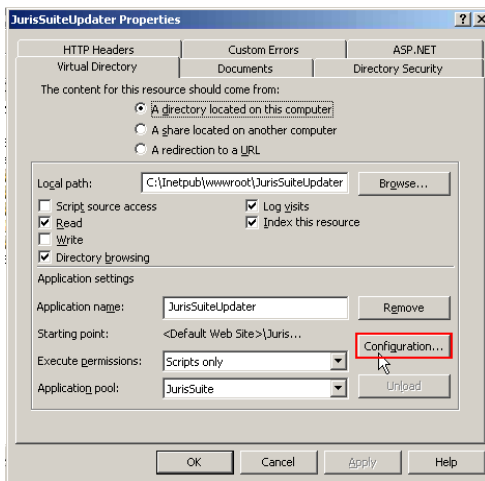
10. Expand the server in the left hand pane.



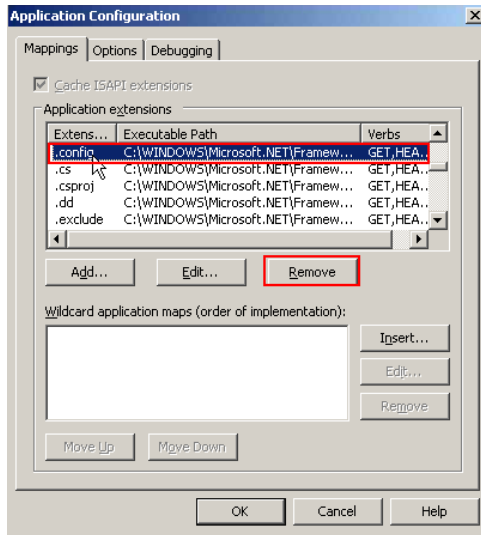
11. Expand the web sites. Right click on the **Juris Suite Updater** and select **Properties**.



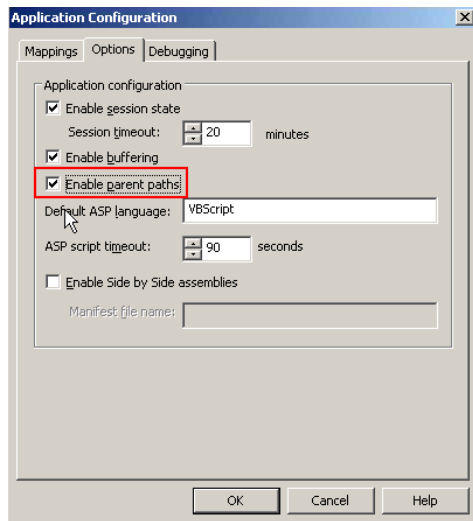
12. On the **Virtual Directory** tab, click the **Configuration** button.



13. Select .config extension, and click the **Remove** button.

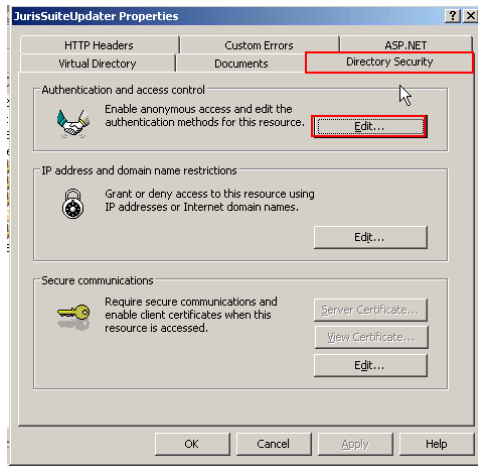


14. Click the **Yes** button to confirm removal of the extension.
15. Click the **Options** tab, and place a check in the **Enable parent paths** box.

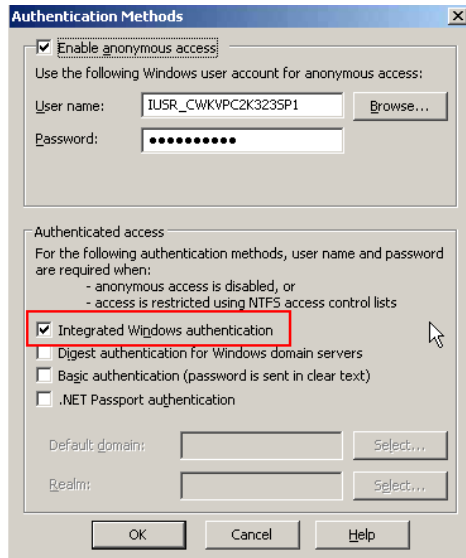


16. Click the **OK** button.

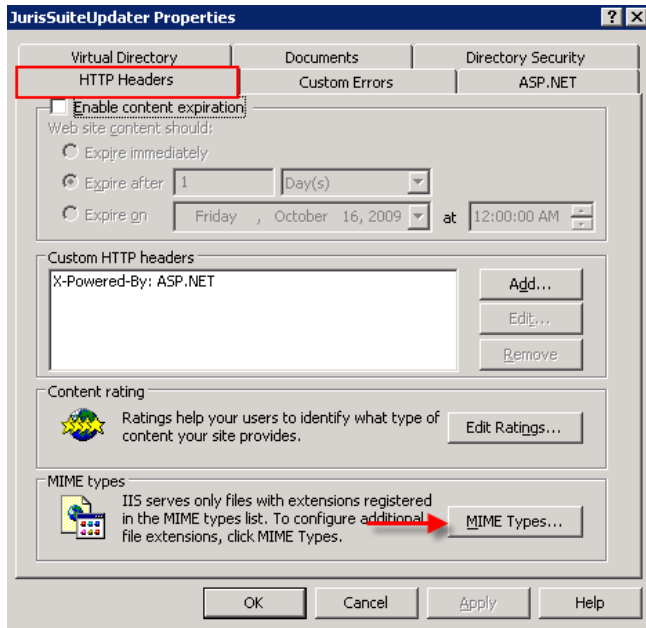
17. Click the **Directory Security** tab, and click the **Edit** button under Authentication and access control.



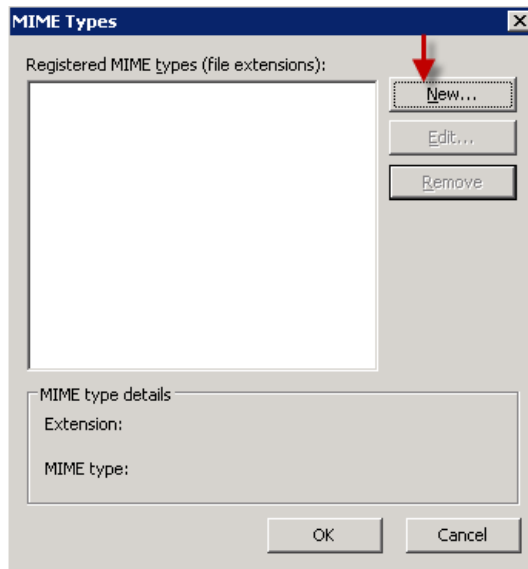
18. Place a checkmark next to the **Integrated Windows Authentication** if no checkmark exists. Click the **OK** button.



19. Select the **HTTP Headers** tab. Click the **MIME Types** button in the **MIME types** section.

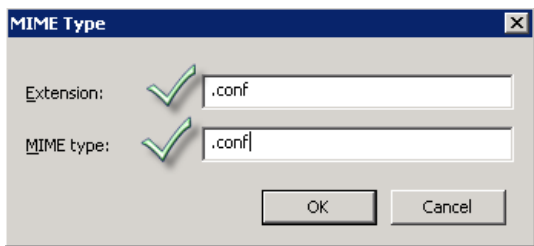


20. Click the **New...** button in the **MIME Types** window.

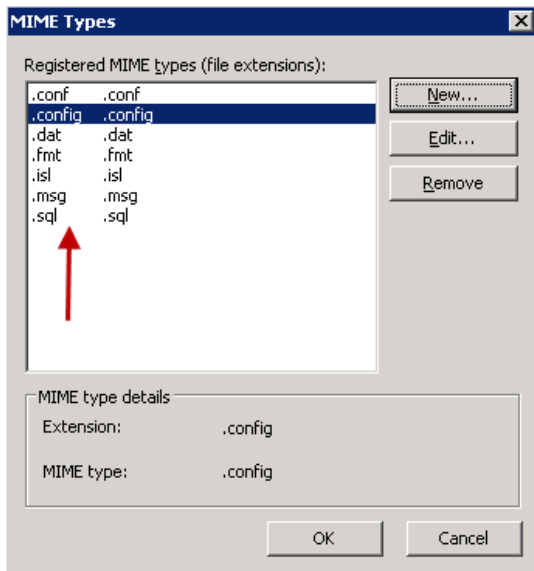


21. Enter each of the following types into the **Extension** and **MIME type** fields. Be sure to add the period before each extension. Click the **OK** button. Repeat the **steps 20 and 21** until all the types are added.

- .conf
- .dat
- .fmt
- .isl
- .msg
- .sql
- .config



22. When you have completed, the window should look like the figure below. Click the **OK** button when complete.

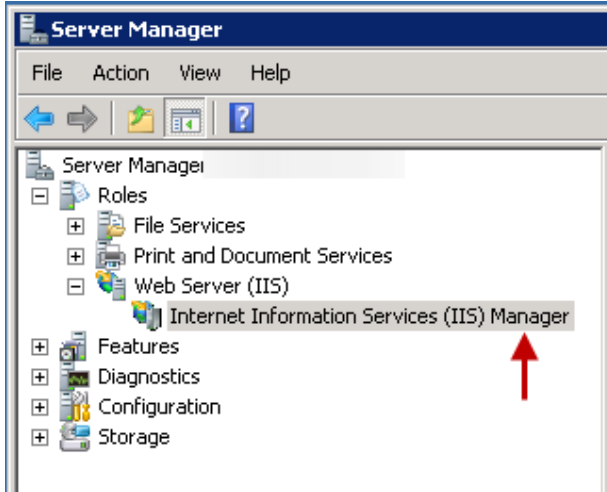


23. Click the **OK** button on the **Juris Suite Updater** window. Close the **Internet Information Services** window.

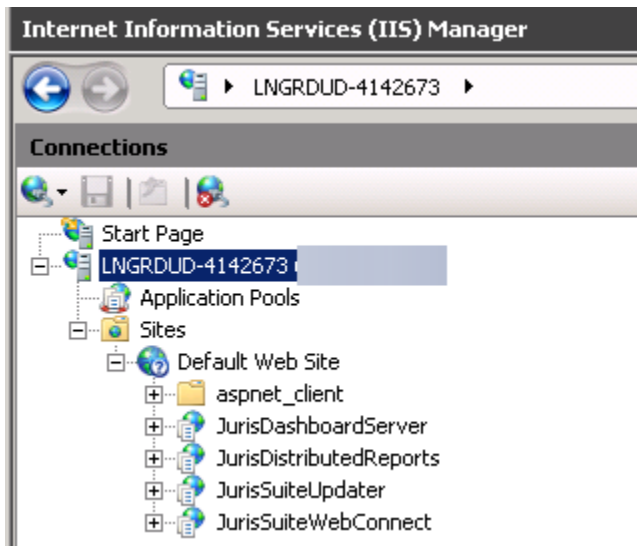
Configuration of IIS7/Windows Server 2008

The following steps are for Windows Server 2008 IIS7 Setup.

1. Select **Server Manager>Roles>Web Server (IIS)>Internet Information Services (IIS) Manager**.

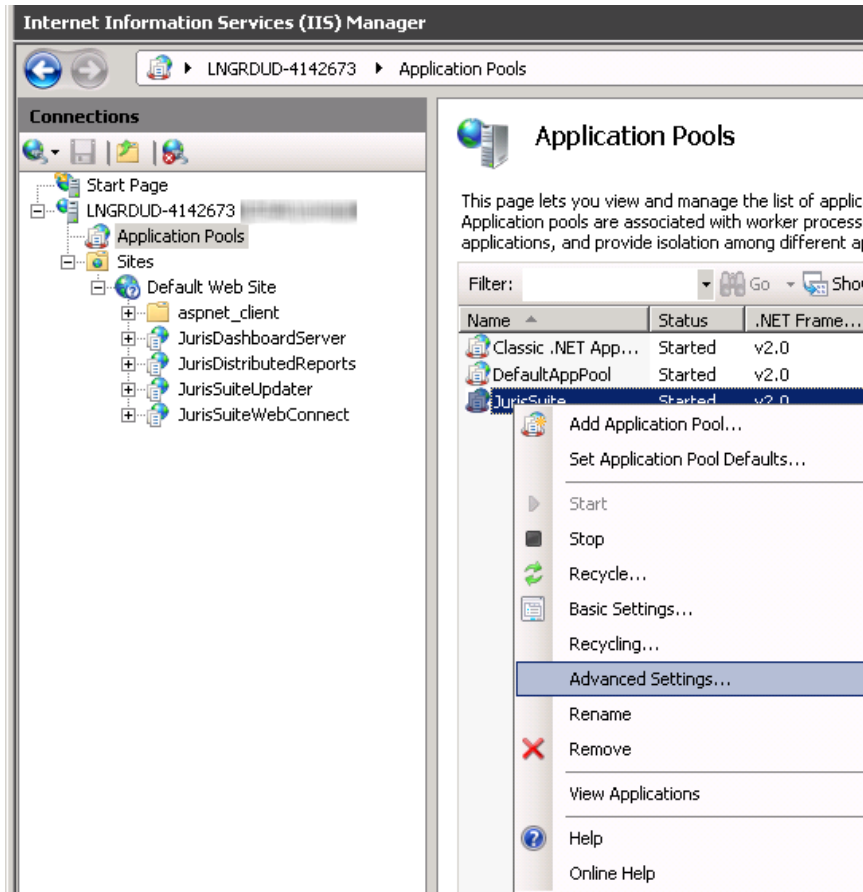


2. Expand the server and sites node.



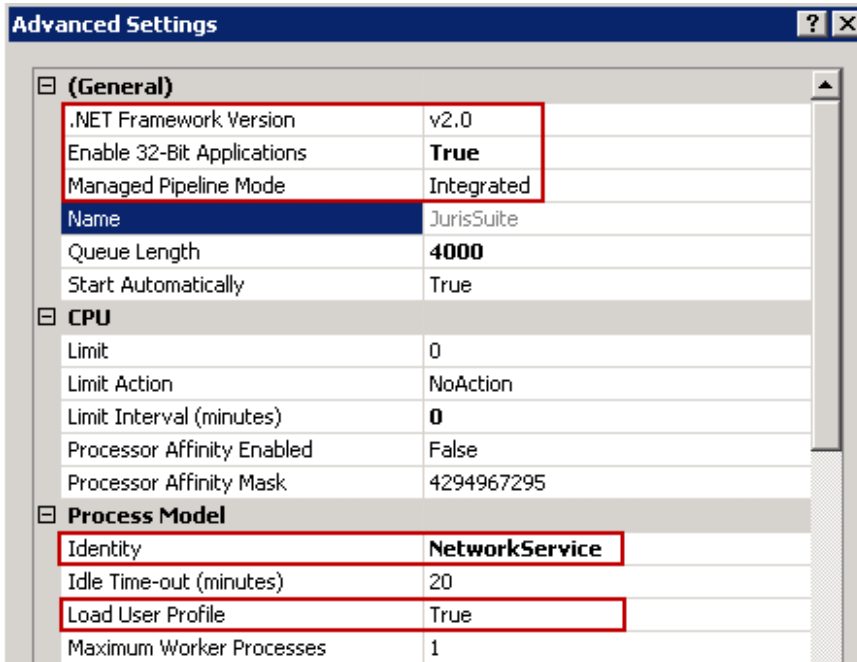
3. Select Application Pools.

4. In the display pane, right click on JurisSuite and select Advanced Settings.

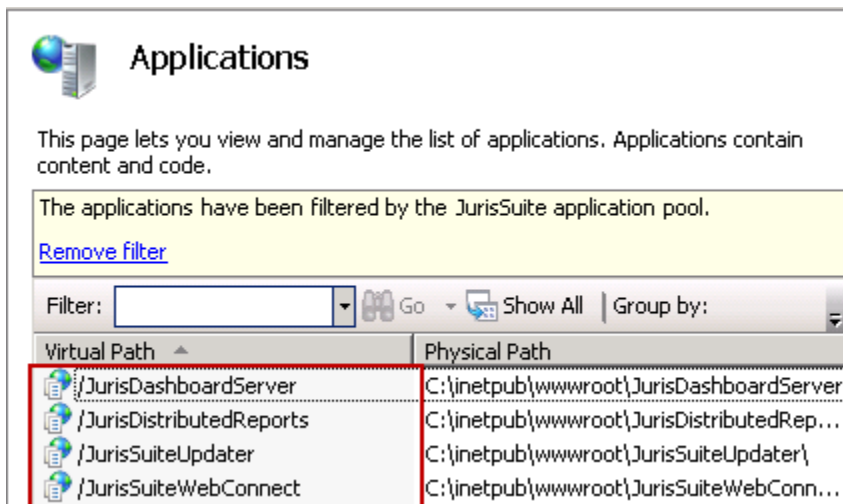


5. Ensure that the following settings are enabled:

- (General) Section
 - .NET Framework Version – v2.0
 - Enable 32-bit Application – True (if you are running 64 bit machine)
 - Managed Pipeline Mode – Integrated
- Process Model Section
 - Identity – Network Service
 - Load User Profile – True

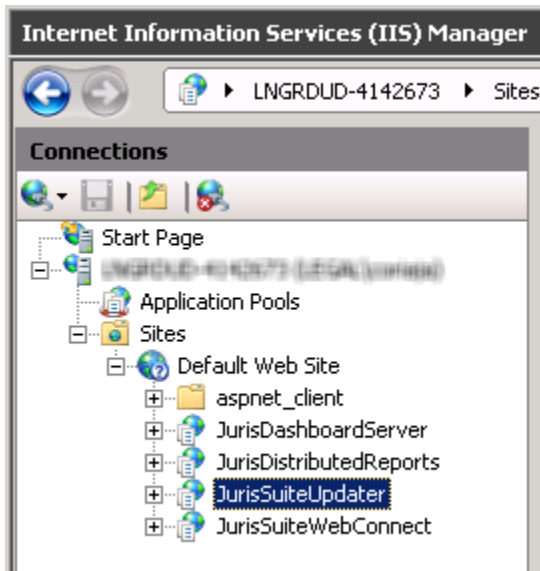


6. Click the **OK** button.
7. Right click on JurisSuite and select **View Applications**.
8. Ensure the following Applications are listed:
 - o JurisDashboardServer
 - o JurisDistributedReports
 - o JurisSuiteUpdater
 - o JurisSuiteWebConnect

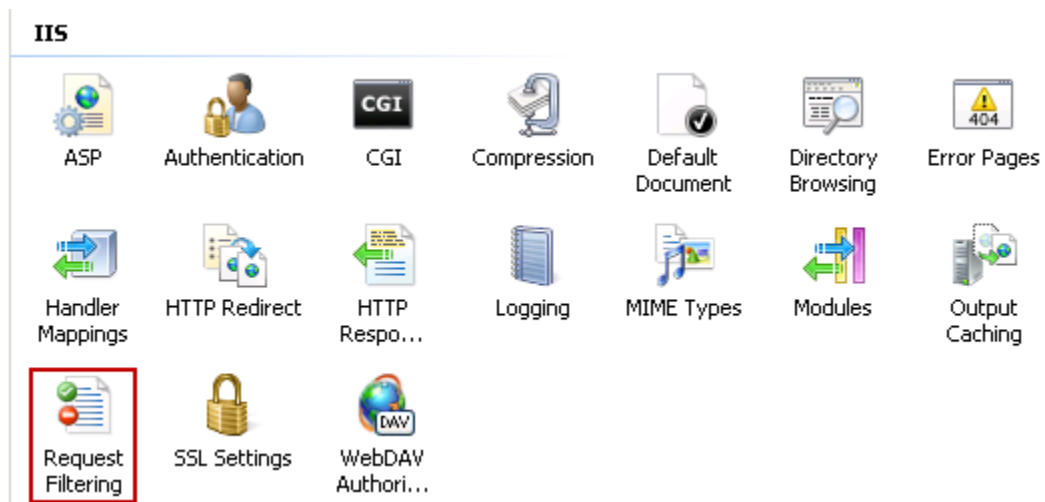


JurisSuiteUpdater Settings

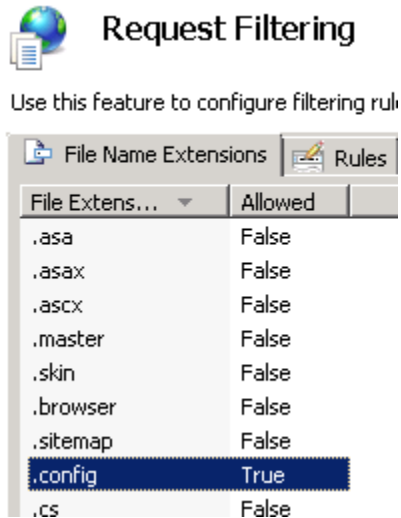
9. Under **Sites**, select **JurisSuiteUpdater**.



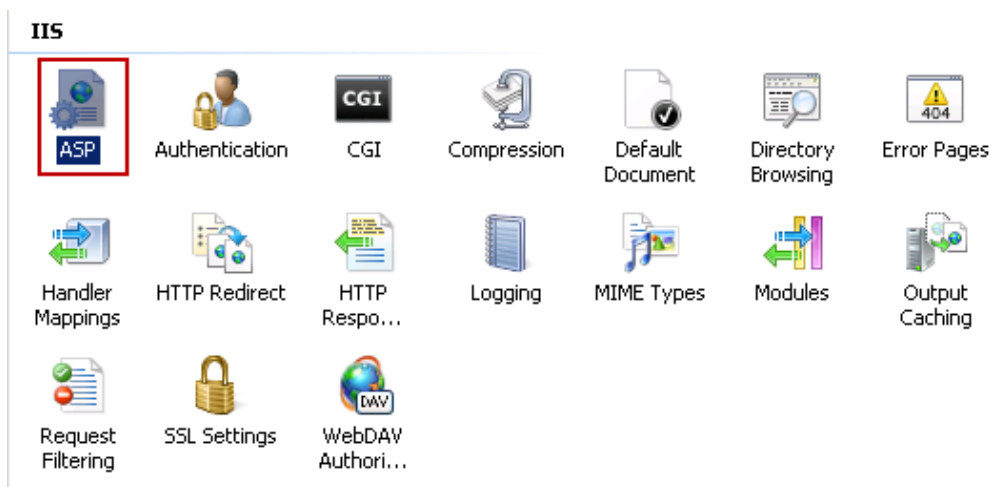
10. In the **IIS** section, double click **Request Filtering**.



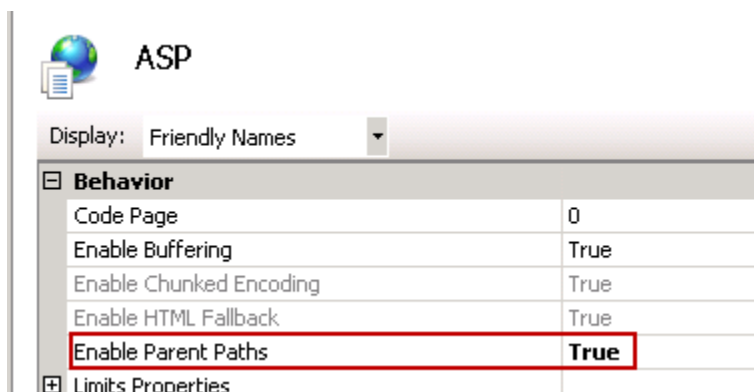
11. Ensure **File Extension .config** is set to 'True'.



12. Return to the **JurisSuiteUpdate** site. You use the back browser button or simply re-select **JurisSuiteUpdater** under **Sites**.
13. In the **IIS** section, double click **ASP**.

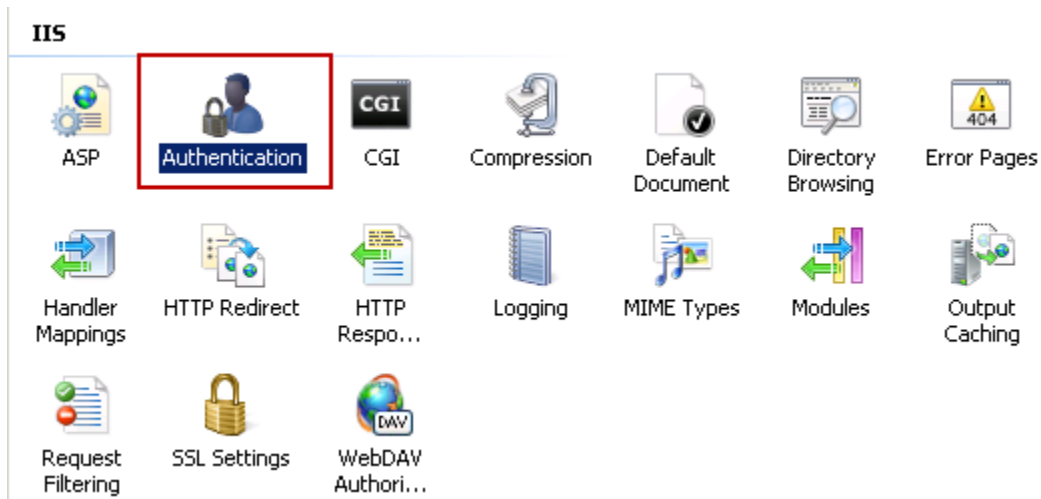


14. Ensure **Enable Parent Paths** is set to 'True'

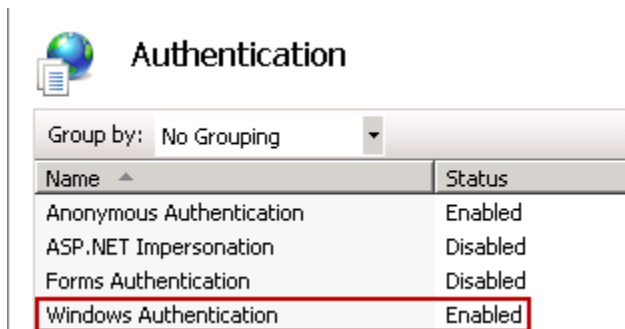


15. Return to the **JurisSuiteUpdate** site. You use the back browser button or simply re-select **JurisSuiteUpdater** under **Sites**.

16. In the **IIS** section, double click **Authentication**.

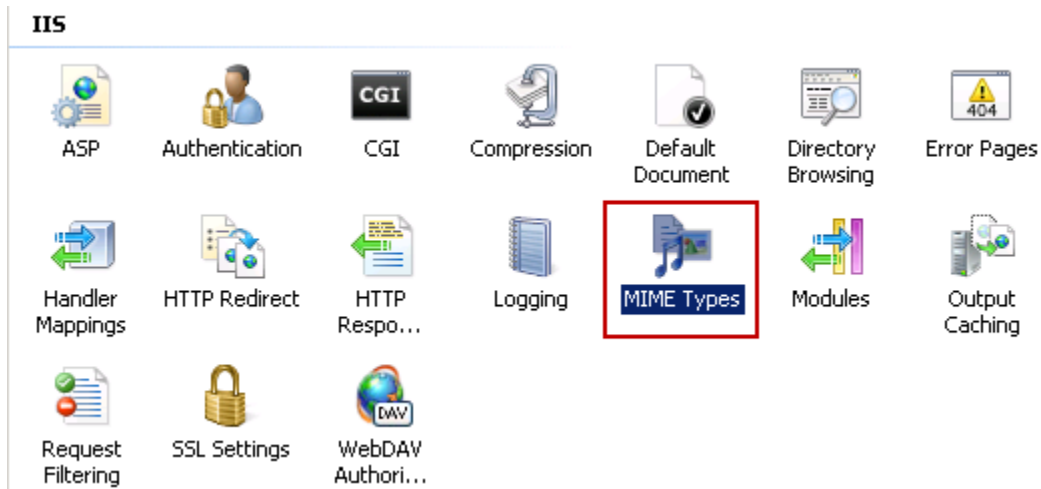


17. Ensure **Windows Authentication** is set to 'True'



18. Return to the JurisSuiteUpdate site. You use the back browser button or simply re-select JurisSuiteUpdater under **Sites**.

19. In the **IIS** section, double click **MIME Types**.



20. Right mouse click in the display pane and select **Add**. You can also use the **Add** link under the **Actions** pane.

MIME Types

Use this feature to manage the list of file name extensions and associated content types that are served by the Web server.

Group by: No Grouping

Extension	MIME Type	Entry Type
.323	text/h323	Inherited
.aaf	application/octet-st...	Inherited
.aca	application/octet-st...	Inherited
.accdb	application/msaccess	Inherited
.accde	application/msaccess	Inherited
.accdt	application/msaccess	Inherited
.acx	application/internet...	Inherited
.afm	application/octet-st...	Inherited

Context menu options: Add..., Help, Online Help

21. Add the following types. You will have to add one at a time, entering 'text/plain' as the MIME type.

- o .conf
- o .dat
- o .fmt
- o .isl
- o .msg
- o .sql
- o .config

Add MIME Type

File name extension:
[.conf]

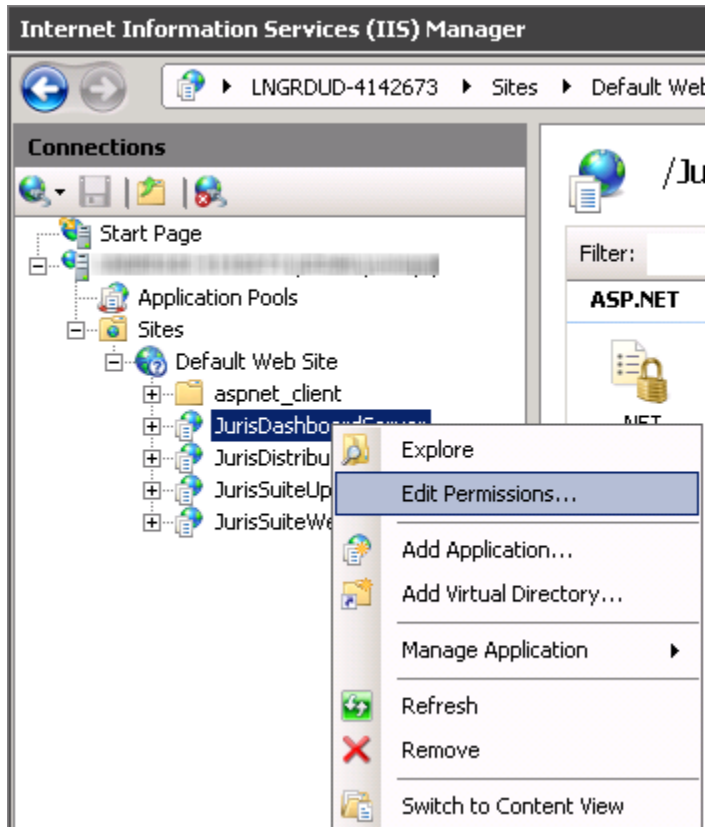
MIME type:
[text/plain]

OK Cancel

Be sure to click the **OK** button each time to complete the additions.

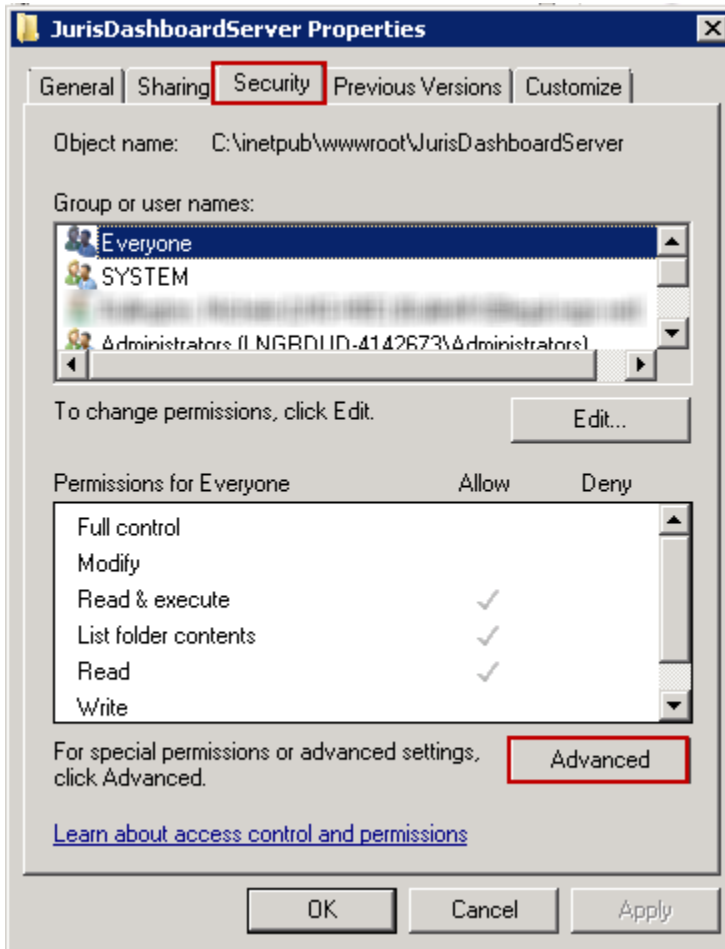
JurisDashboardServer Settings

22. Right click on the JurisDashboardServer and select **Edit Permissions**.

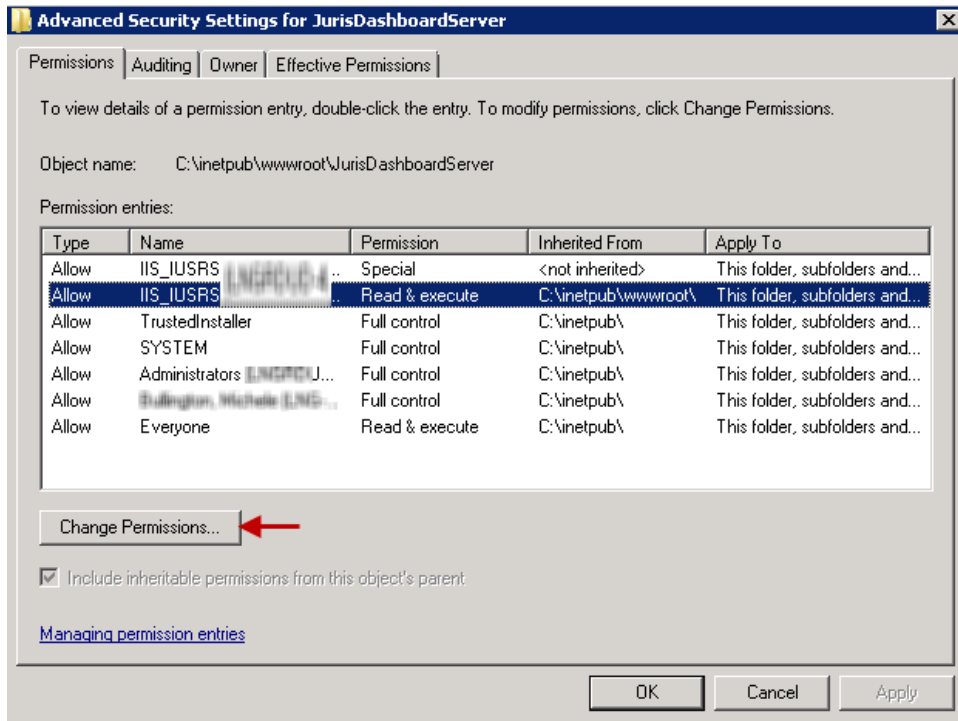


23. Select the **Security Tab**.

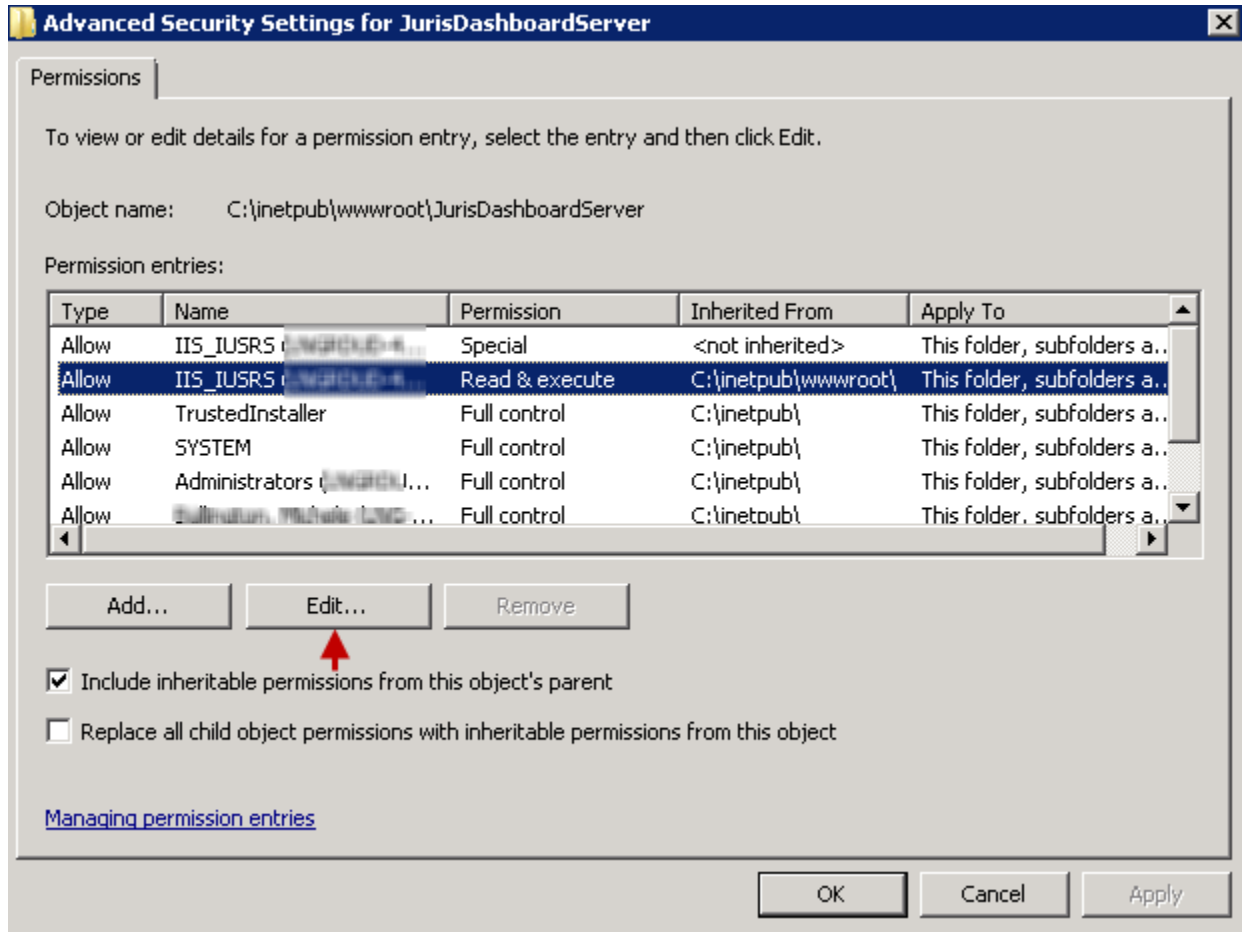
24. Click the **Advanced** button.



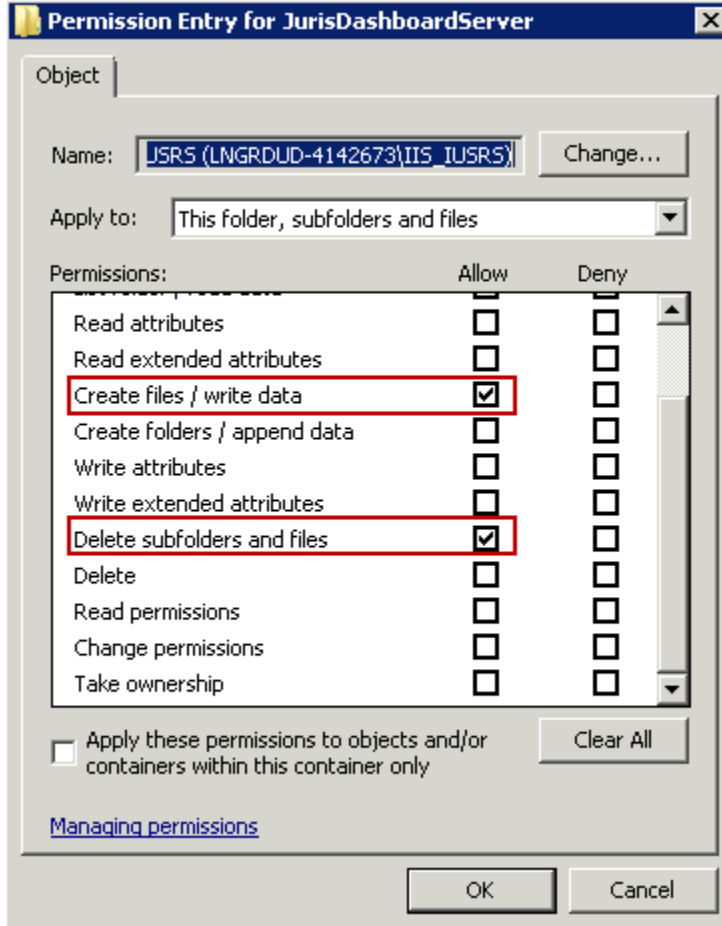
25. Select IIS_IUSRS as indicated below, and click the **Change Permissions** button.



26. Select the same IIS_IUSRS entry and click the **Edit** button.



27. Ensure the **Create files / write data** and **Delete subfolders and files** is set to 'Allow'



28. Click the **OK** button. Click the **OK** button on each of the open windows.

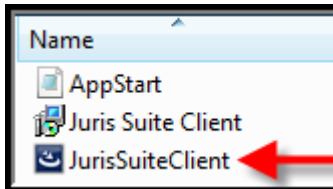
29. Exit IIS Manager.

IIS7 Configuration is completed.

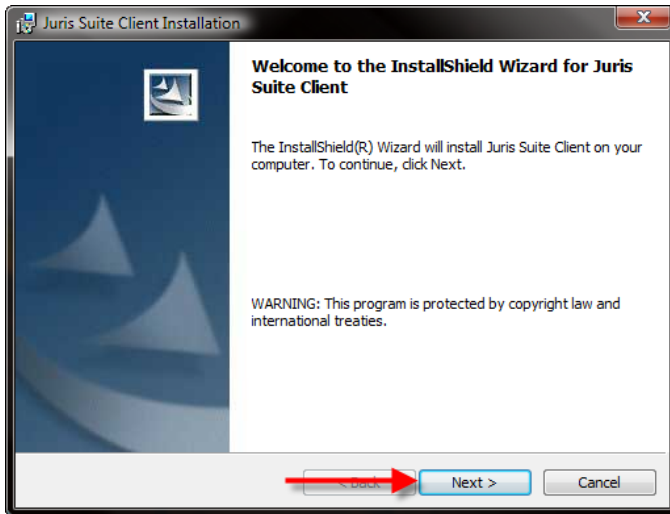
Deployment Manager Installation

Deployment Manager is the key component to upgrading the Juris database and pushing out updates to installed Juris Suite clients on workstations. **It is designed to be installed only on the SQL Server.**

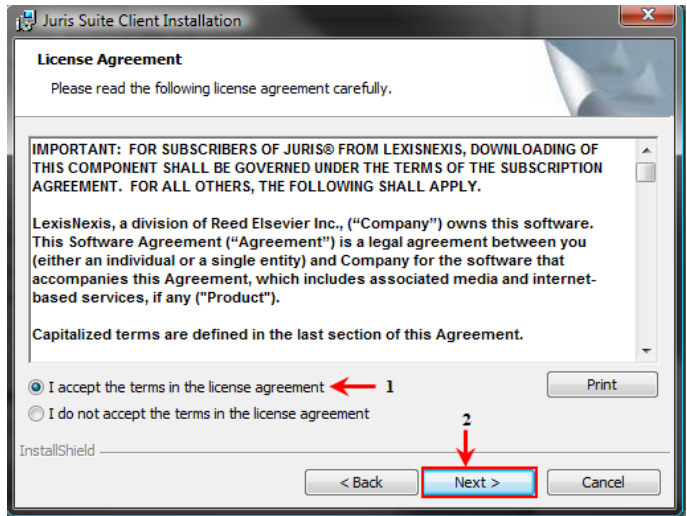
-
1. Navigate to the extracted Juris Suite installation files and double click the **Juris SuiteClient.exe** file.



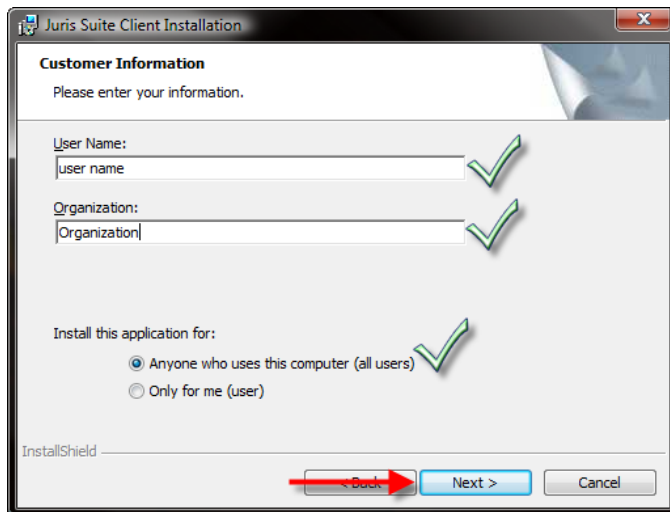
2. Click the **Next** button on the Welcome window.



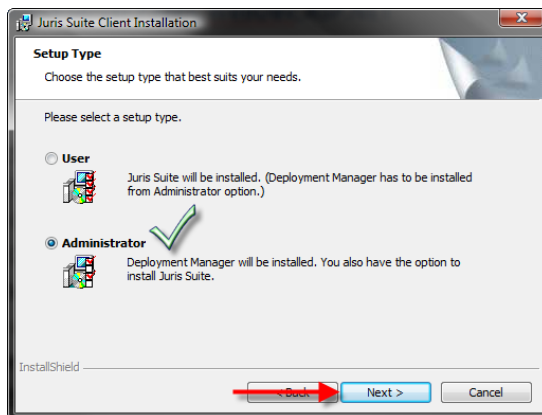
3. Accept the license agreement and click the **Next** button.



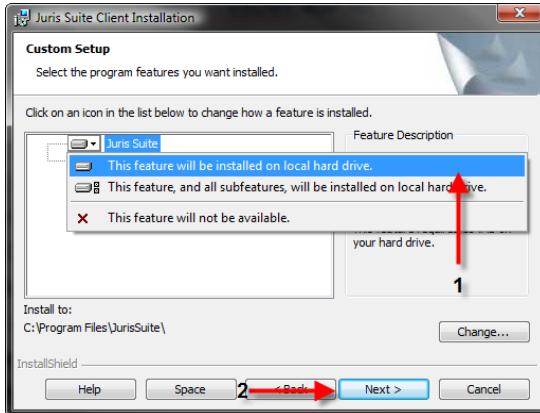
4. Enter the appropriate **Customer Information**, and click the **Next** button.



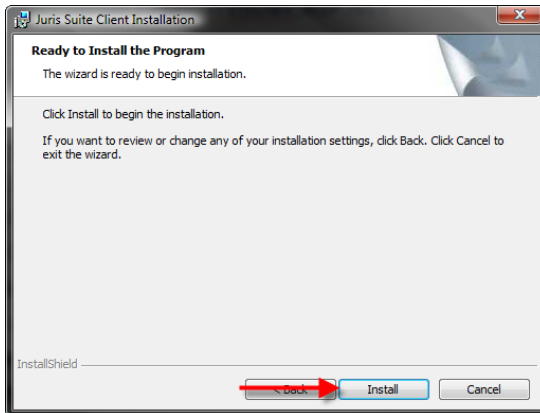
5. Choose **Administrator** and click **Next**.



6. If you **only** want the **Deployment Manager** click the **Next** button. However, if you want **both** the **Deployment manager** and the **Juris Suite client**, click on the **X** next to Juris Suite and select **"This feature will be installed on local hard drive"**. Click the **Next** button.



7. Click **Install**.

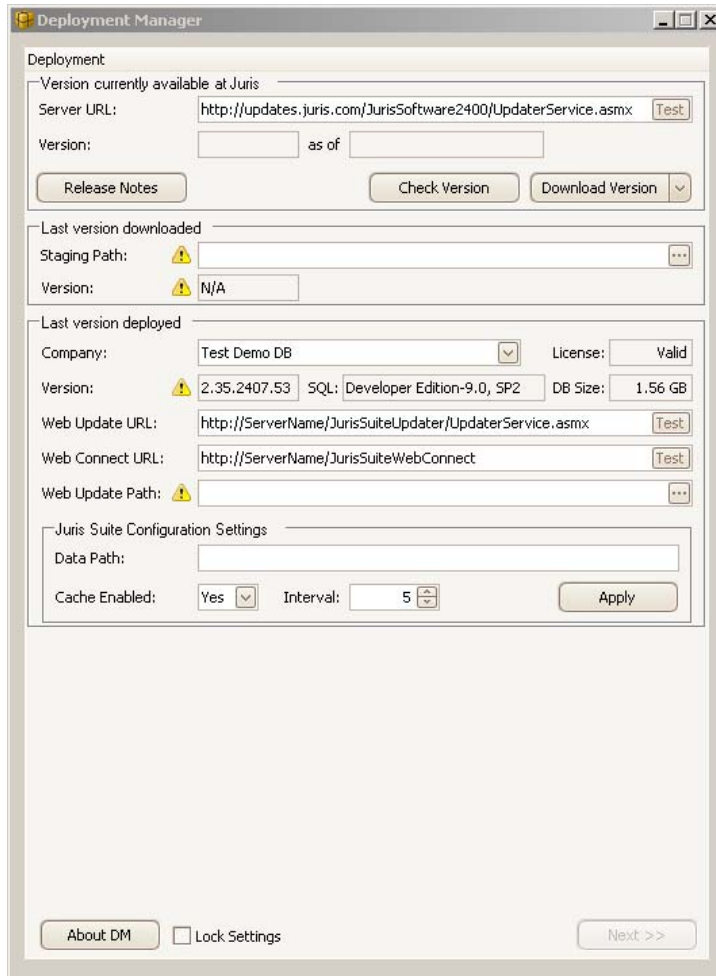


8. When the installation has completed, click the **Finish** button.

Deployment Manager Configuration

9. Start **Juris Suite Deployment Manager**. **Start>All Programs>Juris> Juris Suite Deployment Manager**
10. **Deployment Manager** will load and prompt you to enter and validate some basic information.

Note: If Deployment Manager does not start up, this means either Deployment Manager wasn't installed on the SQL server or the SQL Management Objects Collection wasn't installed during the Pre-Install Requirements section.



The screenshot shows the 'Deployment Manager' window with the following fields and controls:

- Deployment** section:
 - Version currently available at Juris:
 - Server URL:
 - Version: as of
 -
- Last version downloaded** section:
 - Staging Path:
 - Version:
- Last version deployed** section:
 - Company: License:
 - Version: SQL: DB Size:
 - Web Update URL:
 - Web Connect URL:
 - Web Update Path:
- Juris Suite Configuration Settings** section:
 - Data Path:
 - Cache Enabled: Interval:
- Bottom controls: Lock Settings

11. Click the **Check Version** button.

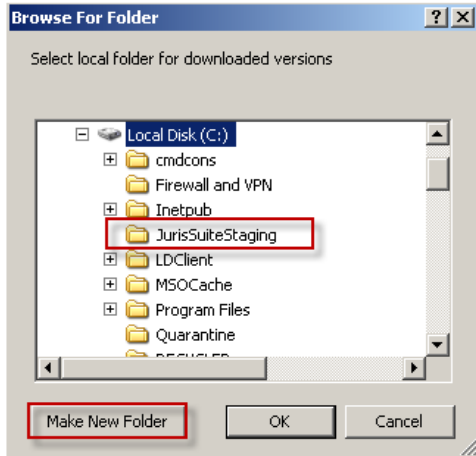


The screenshot shows the 'Deployment Manager' window with the 'Check Version' button highlighted by a red arrow. The 'Version' field is also highlighted with a red box, showing the value '2.35.2407.53' and the 'as of' date '7/22/2009 12:11:24 PM'.

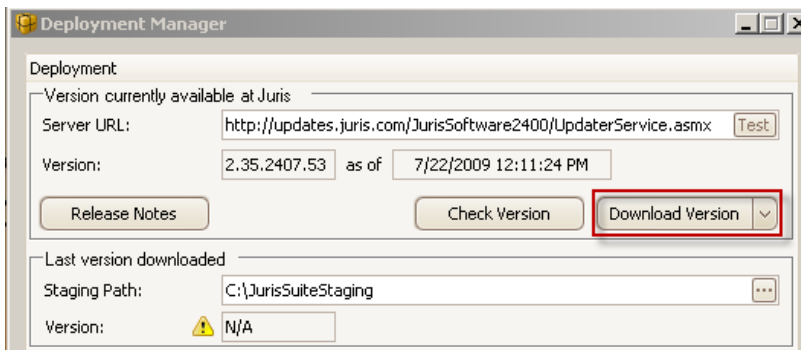
Note: Version number will differ from the image above. It is only used as an example. If you want to review the release notes for the version listed, click the **Release Notes** button. This will launch a separate window in the form of a browser.

The next section is for the Staging Path. This is for storing deployment files. Workstations will not need access to this folder.

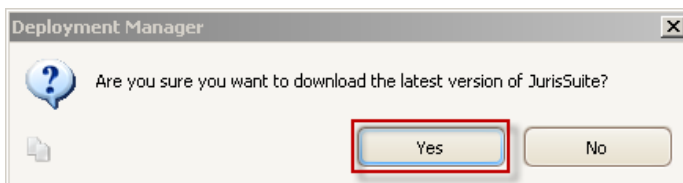
12. Use the ellipses button (...) to open the “**Browse For Folder**” Window.
13. Click once on the root directory that Juris Suite is being installed to.
14. Click **Make New Folder** and name the new folder **JurisSuiteStaging** . Then click **OK**.



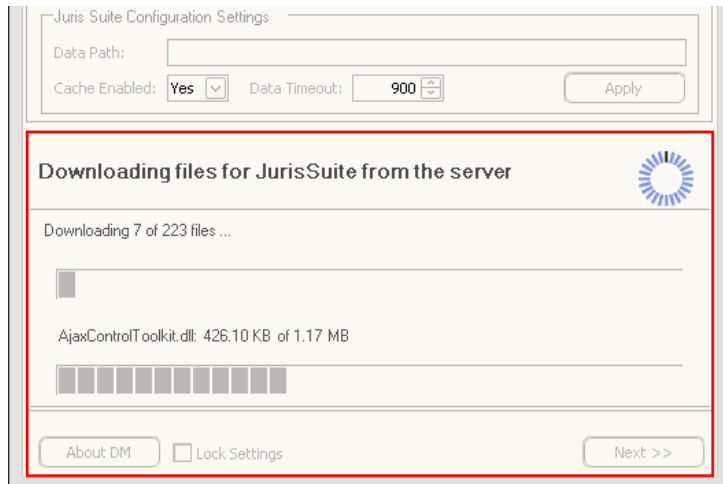
15. Now that the Staging Path is set we can start downloading files by clicking on the **Download Version** button.



16. You will be asked if you are sure you want to download the latest version of Juris Suite. Click **Yes**.



The files will begin to download. This process can take up to 1 hour depending on your connection speed. A status window displays progress of the files being downloaded.



Upon completion, a download log will be displayed at the bottom of the main Deployment Page. This log is useful in determining cause of a failed file download.

The next area to configure is the Last version Deployed section. If you have multiple licenses that are licensed for Juris Suite then you will have to come back to this section after deploying and select the next Company to be deployed.

17. Select the **Company** that you will be deploying Juris Suite against.

18. Check that the **License** is Valid and make note of the **Database Size**.

Note: Servers running **SQL 2005 Express** will not want to deploy if DB Size is **larger than 3.3GB** as this will put the database very close to the **4GB limit** after deployment. The firm will have to upgrade to **Full SQL 2005** in order to deploy Juris Suite.

19. Replace the word **ServerName** in the Web Update URL with the name of the server Juris Suite Server was installed on.

20. Click **Test** to validate the site.

Note: If the site does not validate, be sure that all **pre-install requirements** were completed. If the site still does not validate, **contact Juris Support**.

21. Click **OK** on the validation box.

22. Click **Yes** to the Replace Client Path box.

Web Connect is only used if a remote user **does not** have a **direct** connection to the network (i.e. VPN clients). If there will be workstation requiring **Web Connect** follow **steps 23 through 25**, otherwise skip to **step 26**.

23. Replace the word **ServerName** in the Web Connect URL with the Outside IP address that remote users will be able to access to.

24. Click **Test** to validate the site

Note: If the site does not validate, be sure that all pre-install requirements were completed. If the site still does not validate, contact Juris Support.

25. Click **OK** on the validation box.

The **Juris Suite Configuration Settings** apply globally and are optional. However, the settings are particularly useful for **Citrix** or **Terminal Server** environments. If any changes are made to this area, be sure to click **Apply** to set the change.

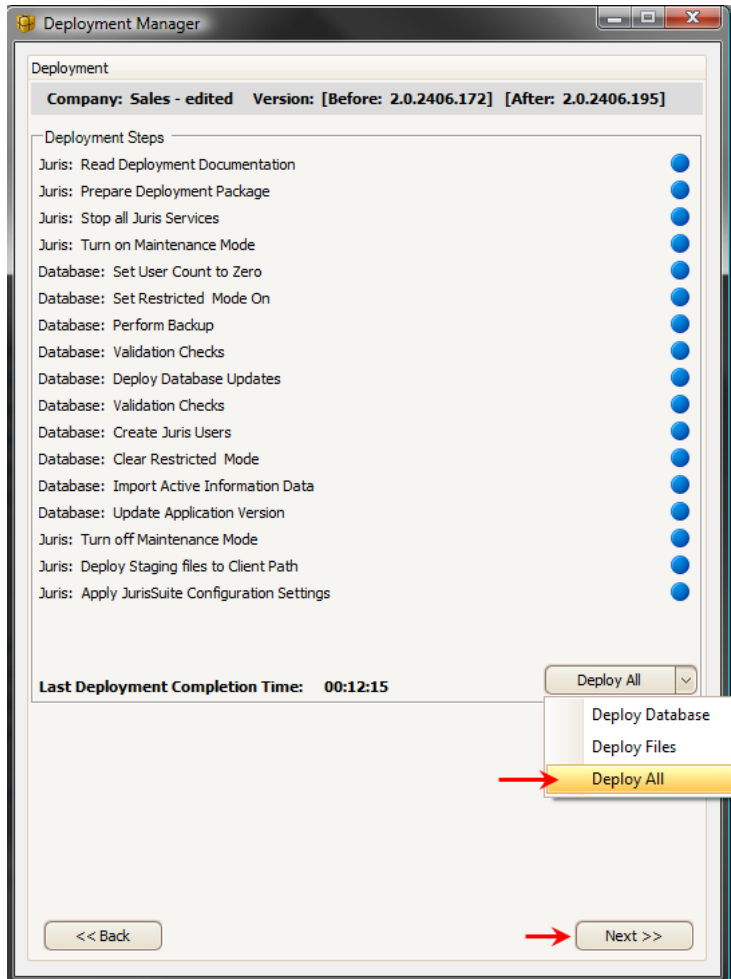
- **Data Path** - This setting is not required for regular environment setups. It is to be used as an alternate path for Juris support files (like cache database). For example: '**C:\Juris**' or '**C:\Juris\@profileuser**'. You may also use a UNC path to if the user has a Home folder setup on the network. If '@profileuser' is used, it will be replaced with the current user's network login. This is ideal for a Citrix or Terminal Server environment where you want to designate the data location.
- **Cache Enabled** - Cache Enabled is designed to help speed up data requests for users on Web Connect. This setting is set to 'Yes' by default. It should be changed to 'No' unless the majority of the firm utilizes laptops that will be using the Web Connect feature. Citrix and Terminal Server environments do not require cache to be enabled since they are on the network already.
- **Interval** – This sets the amount of time between cache synchronizations. This should be increased if workstations are constantly synchronizing the cache. This means synchronizations are overlapping and not completing.

26. Place a check in **Lock Settings** at the bottom to prevent all the settings from being changed.

Deploying Juris Suite Updates

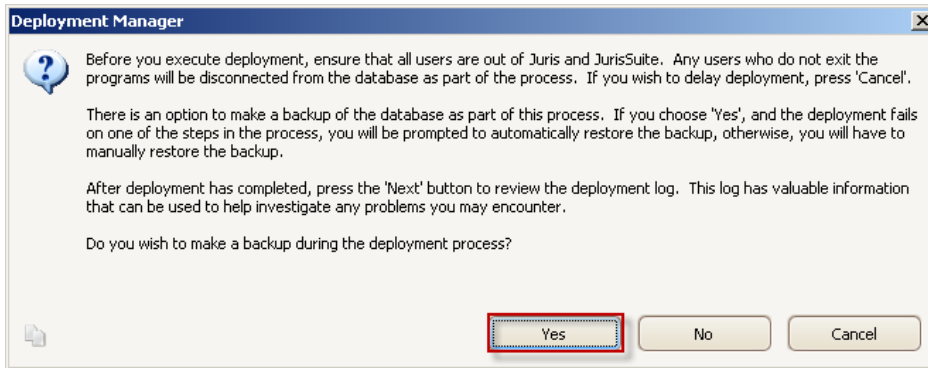
27. Click the **Next** button to proceed with the **Deployment** phase.

The **Deployment Screen** displays the **Company Name**, '**Before**' and '**After**' **Version** information, list of **Deployment Steps** and the **Deployment** button.

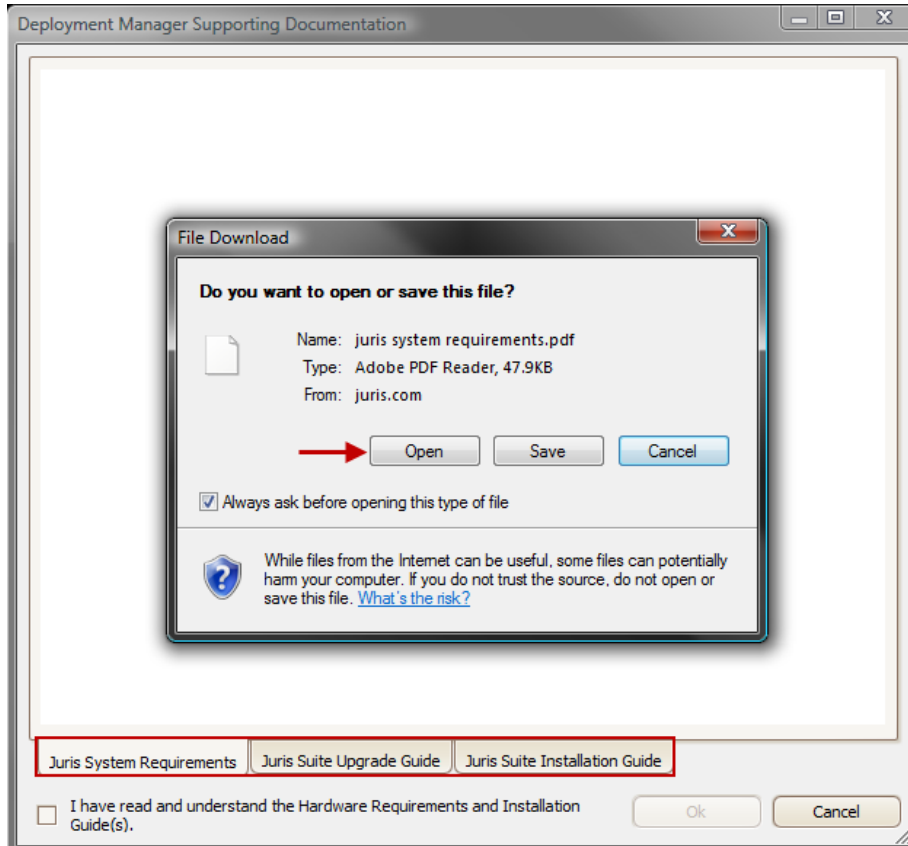


28. The **Deploy** button has three choices. Accept the default of '**Deploy All**'. This will ensure all of the components are updated properly. Using the '**Deploy Database**' can be used to simplify the process for clients that have multiple databases. Each database must be deployed with the updates. Using the '**Company**' combo box on the initial **Deployment Manager** page allows for database selection.

29. A window will display providing you with advice and the inquiry as to whether or not you want to make a **Backup** of the database during the deployment. Click the **Yes** button.

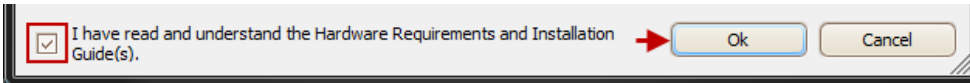


30. The next screen is a review of documents (including this one) and acceptance of the review. Included are the **Juris System Requirements**, the **Juris Suite Upgrade Guide** and the **Juris Suite Installation Guide**. Read the appropriate documents.

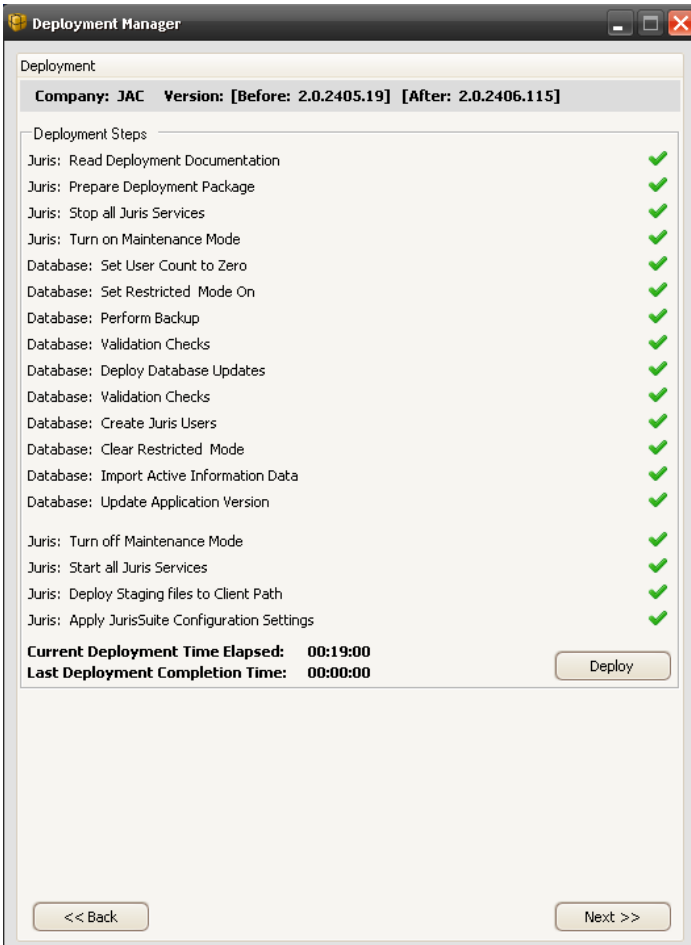


Note: You must have a program to view the **PDF** format files. Adobe Acrobat Reader is the most common and is available as a free download.

31. Click inside the checkbox for 'I have read and understand the System Requirements and Install Guide(s)'



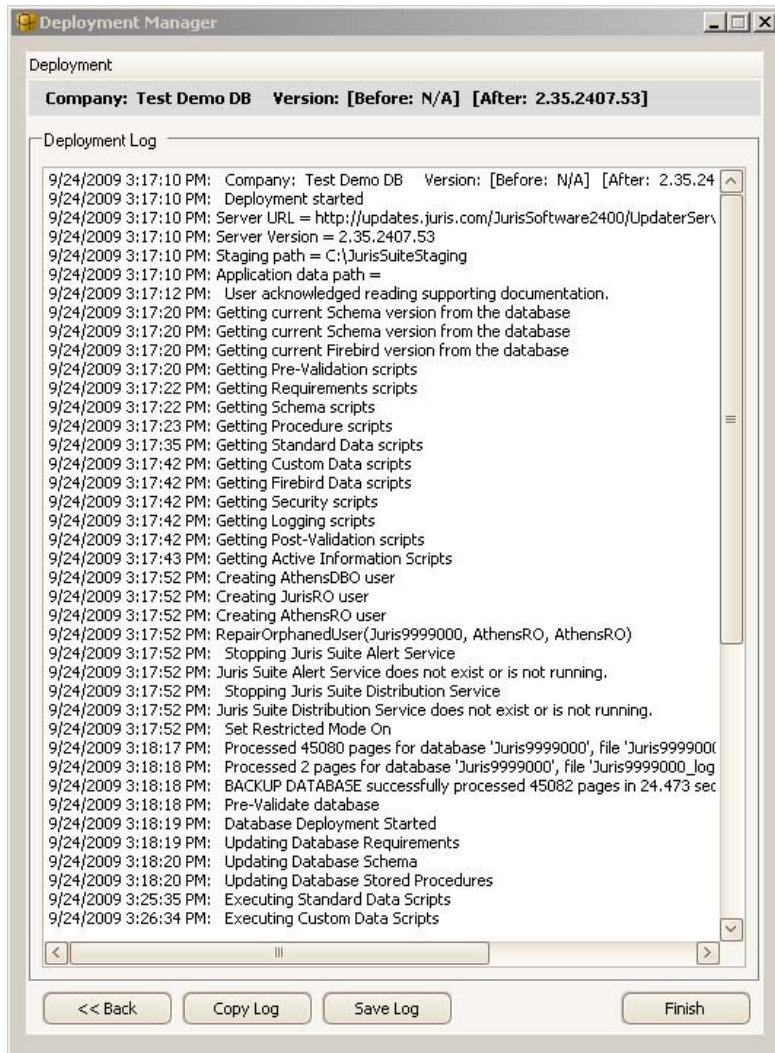
32. Click the **OK** button. The deployment will commence and check off the steps as they complete.



33. When the deployment completes, depending on the outcome you will be prompted for one of these two items. Perform the step below that corresponds with the screen.
- If deployment is successful, click **Yes** to the prompt to delete the backup created. Continue to **step 34**.
 - If deployment failed, click **Yes** to restore the backup created. After restoring, follow **step 35** and be sure to save the error log and call **Juris Support at 877-377-3740**.

A deployment summary will disclose all the tasks that finished without error or with error.

34. Click the **Next** button. The **Deployment Log** window will appear.



35. If you want to save a version of the log, click the **Save Log** button. This will prompt you to save the log file with a .txt file extension. You can also use the **Copy** button if you want to send the contents of the log to the **Clipboard**. Click the **Finish** button when complete.

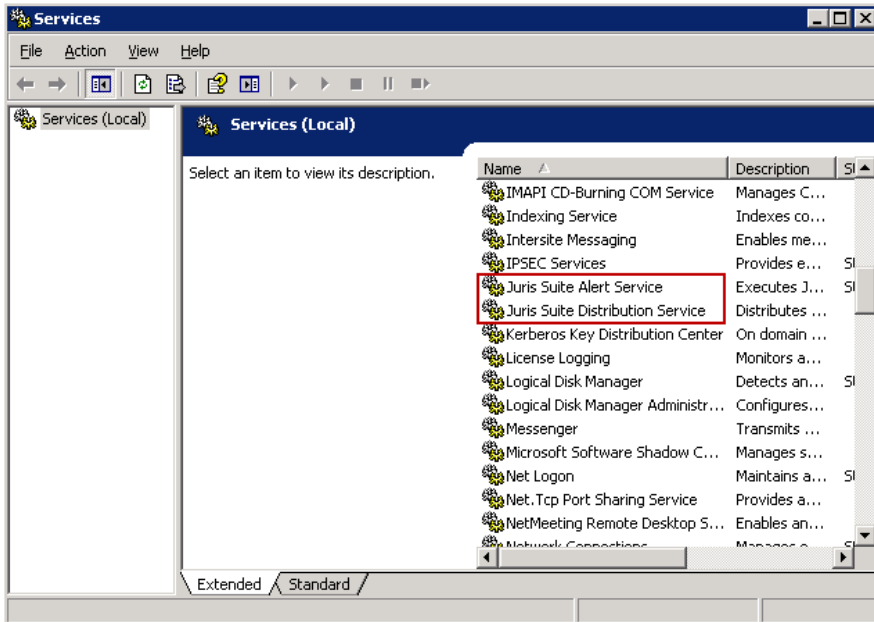
36. Click **Yes** to exit Deployment Manager.

Configuring and Starting Juris Suite Services

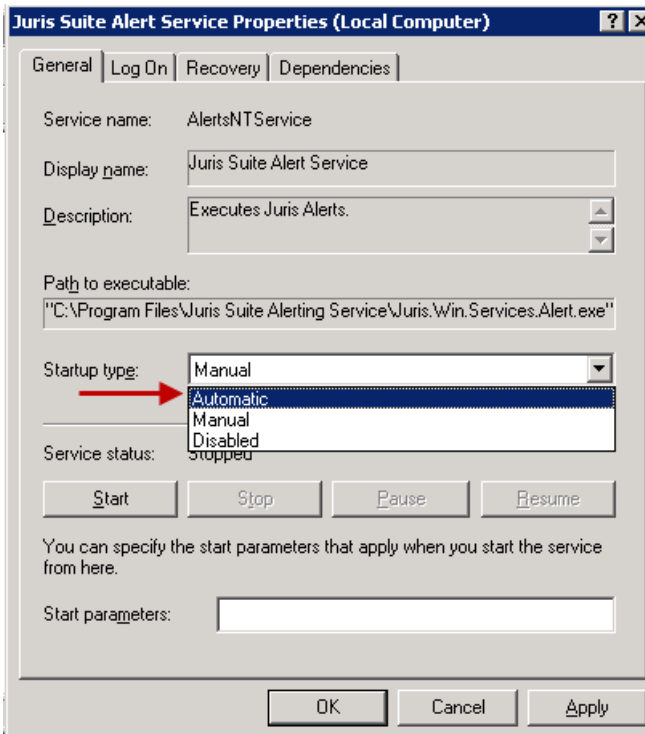
This is a requirement for the **Juris Suite Business Intelligence** and **Juris Suite Core Reporting** Snap Ins to function properly. Skip this section if both of these modules were not purchased.

37. Open services by going to **Start> All Programs> Administrative Tools> Services**.

38. Scroll down to the **Juris Suite Alert Service** and **Juris Suite Distributions Service**. First we'll configure and start the Juris Suite Alert Service.

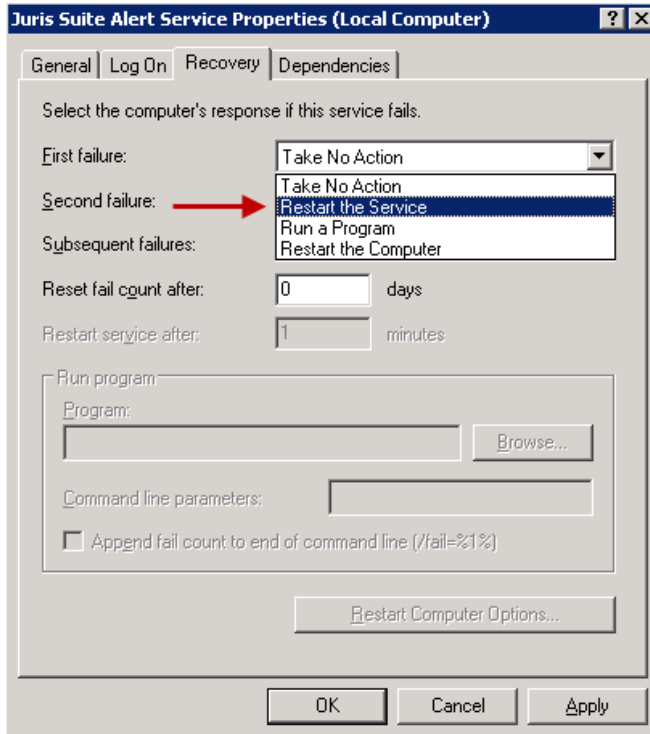


39. Double click the **Juris Suite Alert Service** to bring up the **Juris Suite Alert Service Properties** window.
40. In the **Startup type** drop down, select **Automatic**



41. Click the **Start** button to start the service.
42. Click on the **Recovery** tab at the top.

-
43. For **First Failure**, **Second Failure** and **Subsequent failures**, click on the drop down menu and select **Restart the Service**.



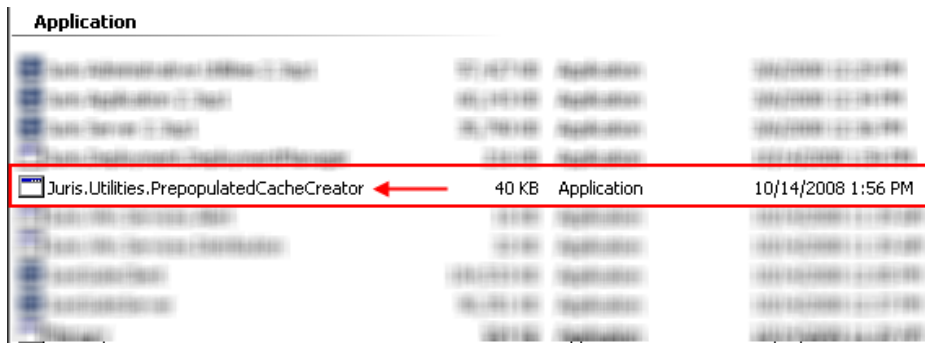
44. Click the **OK** button to close out of the properties and accept changes.
45. Repeat **Steps 39 through 44** using the **Juris Suite Distribution Service**.

Creating a Prepopulated Cache (Optional)

Firms with large databases or multiple users with cache enabled can save time on the back end by creating a pre-populated cache. This allows you to create the Cache from any Client workstation and place it on a shared drive. Make sure the folder or drive location has permissions set so that each user performing the import can access the file. This file is for the initial setup of a cache or if they have to rebuild and it only needs to be created one time. It is recommended to perform exporting with everyone out of Juris and the database in Maintenance mode. This is to prevent changes to the Juris database from corrupting the pre-populated cache file while it's being exported. The export process can take anywhere from 10 minutes to 3-4 hours depending on database size.

46. On the drive Juris Suite Client was installed, navigate to **Program Files\Juris Suite\GeneralRelease**.

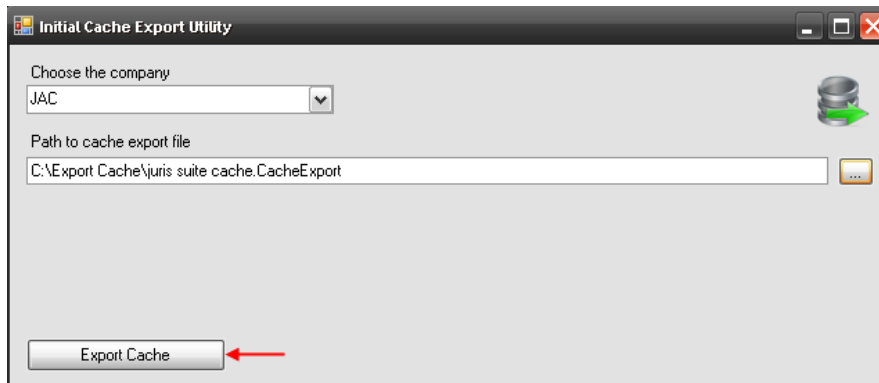
47. Locate and double click the executable file '**Juris.Utilities.PrepopulatedCacheCreator.exe**'.



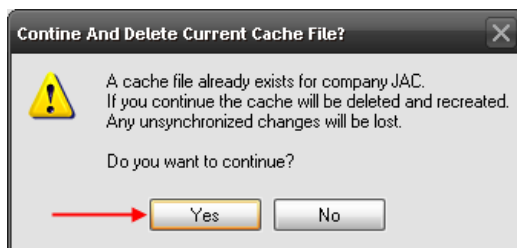
48. Select the Company to Export. You must do this for each company if you have more than one.

49. Enter the path to save the cache file. Remember to make sure that it is a location that can be accessed by those wanting to import. You can also use the **ellipses** button to navigate to the location.

50. Click the **Export Cache** button.



51. Click the **Yes** button on the continuation window.

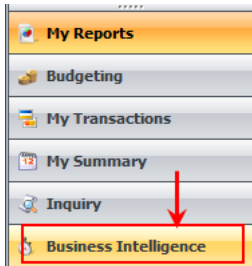


52. When the Export has completed. Click the **Finish** button.

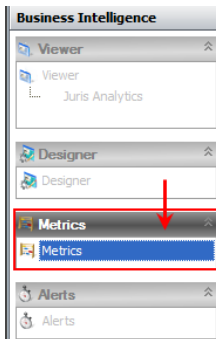
Publishing the Juris Suite Dashboard Metrics

This is a requirement for **Juris Suite Business Intelligence Snap In** to display data in the dashboards. Skip this section if the module was not purchased.

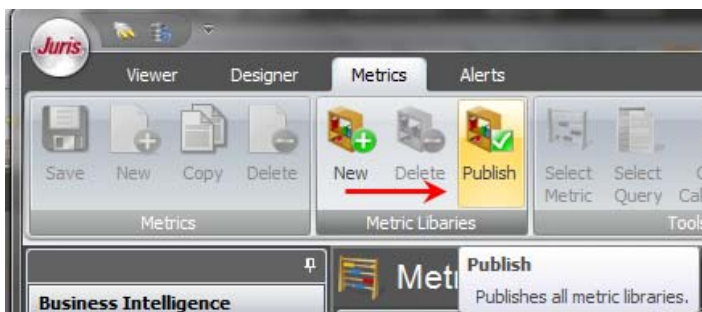
53. Log into **Juris Suite** as **SMGR**.
54. Click on the **Business Intelligence** snap in.



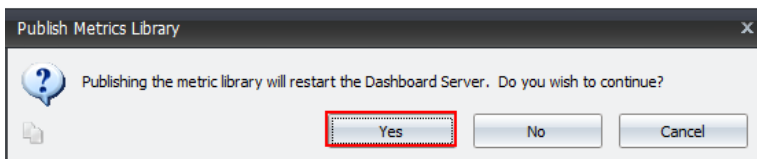
55. Click on the **Metrics** Tab.



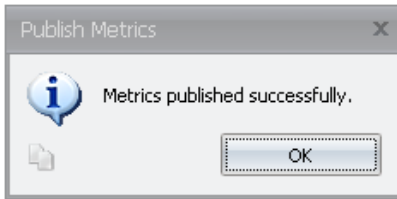
56. Click **Publish** on the **Metric Libraries** tool ribbon.



57. Click the **Yes** button to proceed.



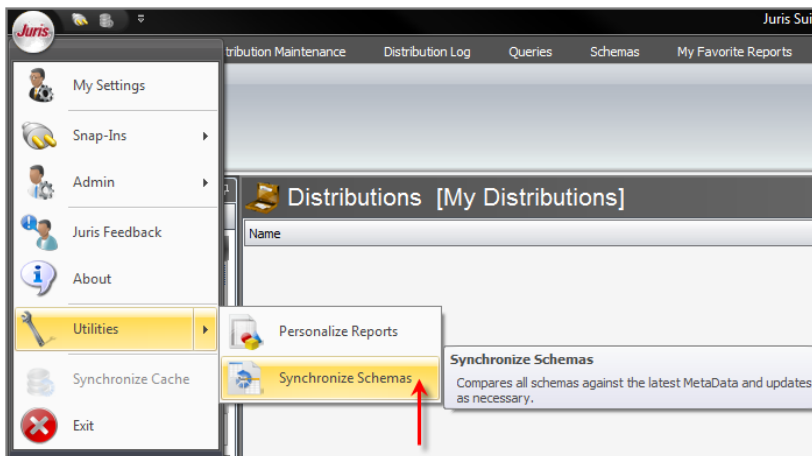
58. Click **OK** after the Metrics have been published.



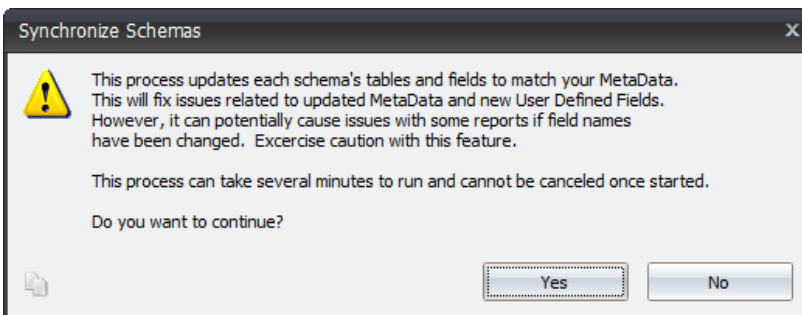
Synchronize Schemas

Synchronize Schemas is an important function that adds updated/changed information made to the Juris database table structure including metadata and UDFs (User Defined Fields). When you create a schema, it uses the metadata to display the tables and the fields. If additional tables or fields have been added to the metadata, they will not be in the existing standard or custom schemas. To make the fields available, you **MUST** run '**Synchronize Schemas**' to add that information to the existing schemas. This is an **Administrator** only function.

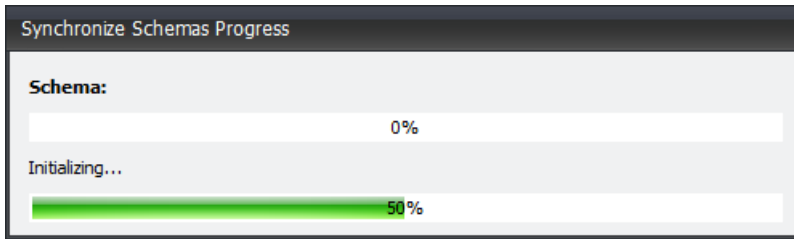
59. Log In to **Juris Suite** as **SMGR**.
60. Select the **Synchronize Schemas** function from the **Utilities** menu item.



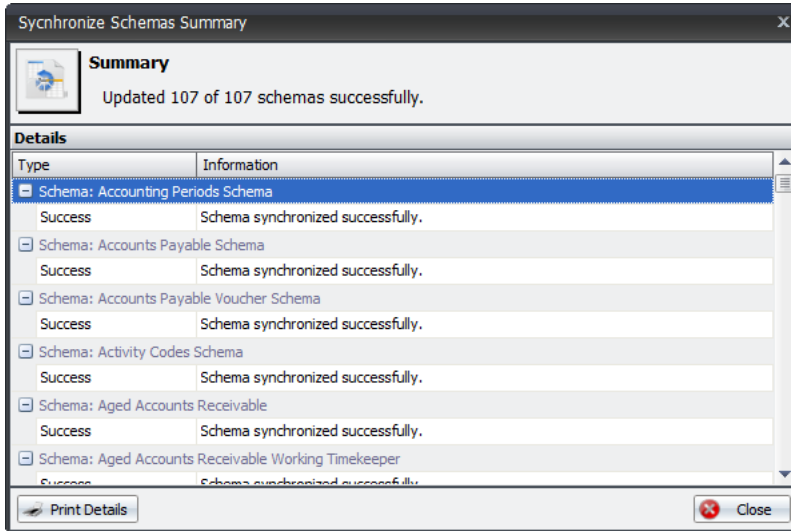
61. The **Synchronize Schemas** window will appear explaining the conditions of the function and whether you want to continue. Click **Yes** to continue.



62. The process will begin and a status window will be displayed.



Upon completion, a summary window will appear.



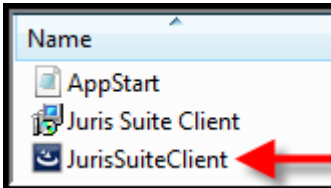
63. You can click the **Print Details** button to print out the finished report.

64. Click the **Close** button when finished.

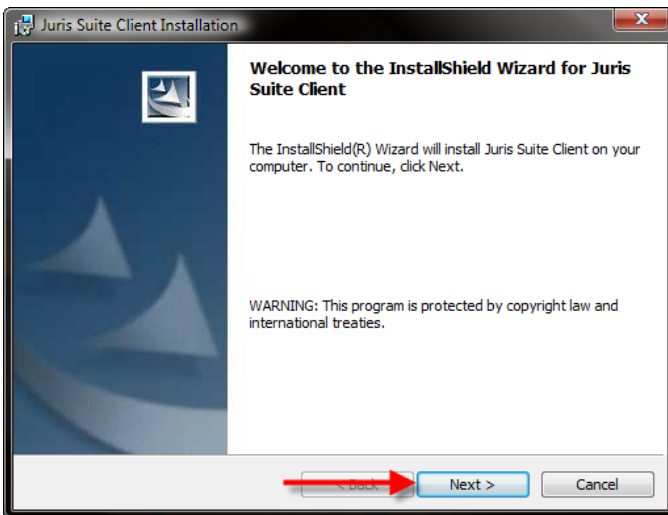
Client

Install Juris Suite Client

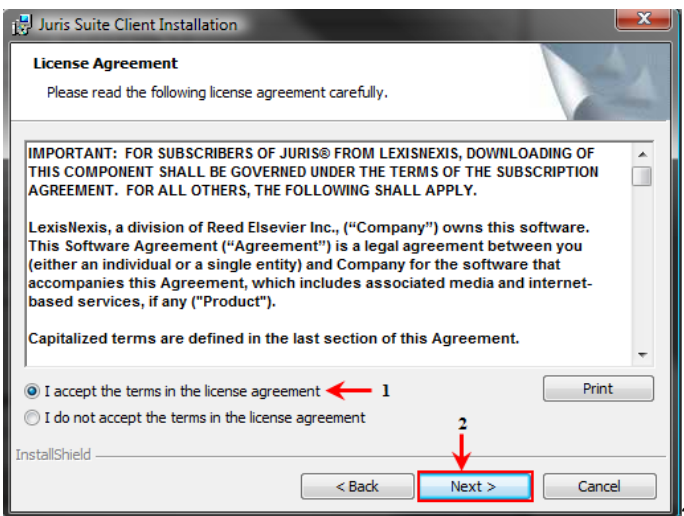
1. Double click the **Juris SuiteClient.exe** file.



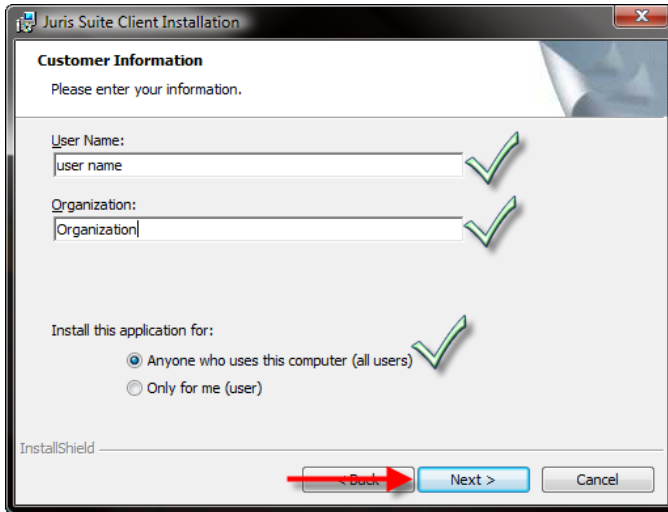
2. Click the **Next** button on the Welcome window.



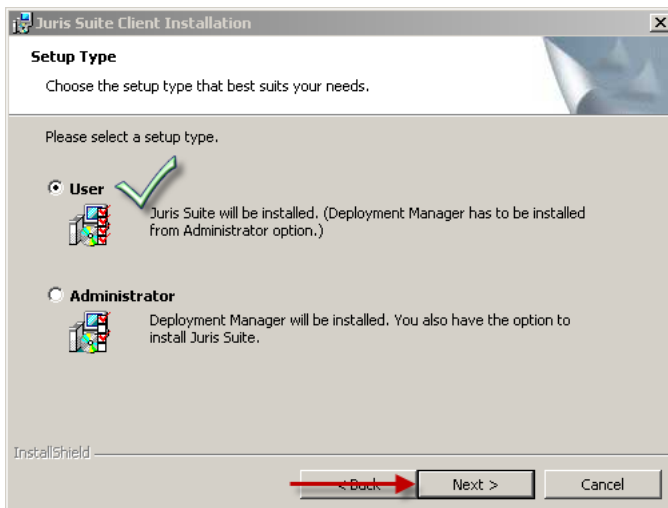
3. Accept the license agreement and click the **Next** button.



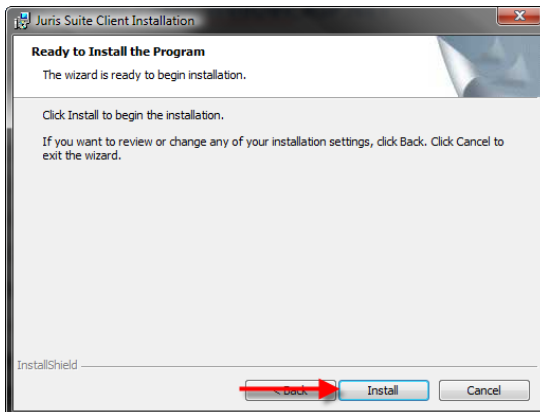
4. Enter the appropriate **Customer Information**, and click the **Next** button.



5. Keep the default of **User** and click **Next**.



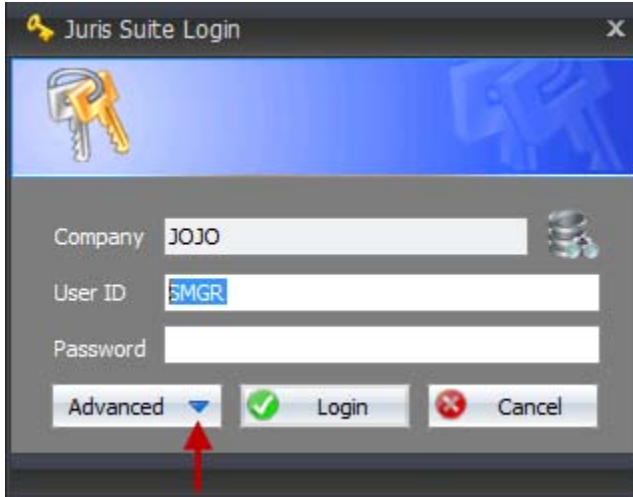
6. Click **Install**



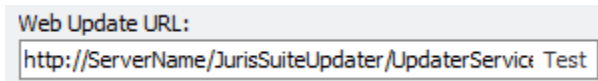
7. When the installation has completed, click the **Finish** button.

Client Configuration

- Click the **Advanced** down arrow.



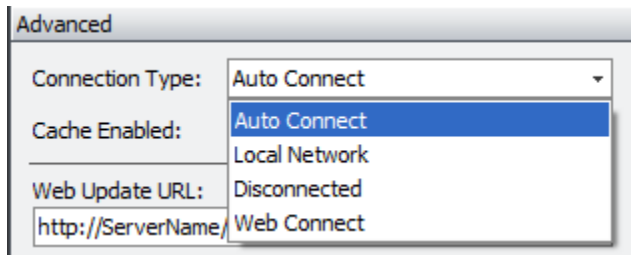
- Replace **ServerName** for **Web Update URL** with the name of the server (for internal users) or the Outside IP Address (for Web Connect users).



- Click **Test** to validate the site. Then click **Ok**.
- Click **Reset to Default Settings**.
- Choose **Yes** to get a new configuration file. This will automatically populate the settings that were set in Deployment Manager and restart the program.



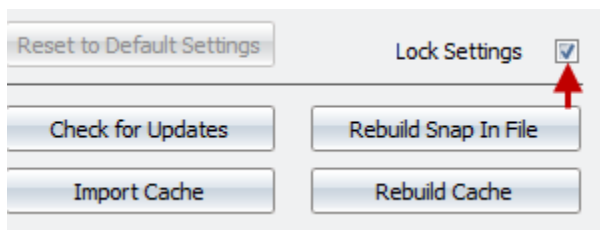
13. If Web Connect is required click **Advanced** again and select the **Connection Type** that the user will be mainly using. The default is '**Auto Connect**'. The program is designed to choose the next lowest connection type if the selected fails.



- **Auto Connect** – Allows the application to choose the connection. Recommended for laptops that go between the office and home that do not have a VPN available.
 - **Local Network** – Used if you are on a LAN. Does not require cache. Recommended for Citrix/Terminal Server Client installations and desktop/laptop computers in the office or working off VPN.
 - **Disconnected** – Offline mode for users without an internet connection. Requires cache.
 - **Web Connect** – Allows you to remotely use Juris Suite via an Internet Connection. Requires cache and the Web Connect URL to be filled out.
14. Set **Cache Enabled** to the appropriate setting for the above connection type. Cache Enabled “**No**” will automatically set the Connection type to **Local Network**.
15. Make note of the **Interval** times minutes. (Adjusted only for slower networks).



16. Check the **Lock Settings** box to prevent accidental changes to the above settings.

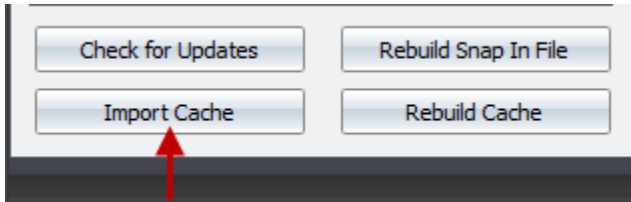


If cache is **enabled** for most of the company, it is strongly recommended to create a **pre-populated cache** to import initially to save time. Use the **Import Cache** button to Import a saved pre-populated **cache file** on a shared drive. See **Importing a Cache** section of this document.

Importing a Cache (Optional)

After a new install of Juris Suite client, you can import the cache before logging in. To import the saved cache, perform the following:

17. Launch the **Juris Suite** application.
18. On the log in screen, click the down arrow on the **Advanced** button.
19. Click the **Import Cache** button.



20. Navigate to the saved cache file location.
21. Click **Yes** button to accept the import.
22. When the import is complete, log in to **Juris Suite**.

Conclusion

This concludes the setup of Juris Suite. It is recommended that you go through the [Juris Suite Settings and Permissions](#) document before allowing users to use Juris Suite. This document can be found in our Additional Product Documentation section of the [Juris Support Center](#).